

MCX'SX CTCL DOCUMENT

cTide

December 14, 2010

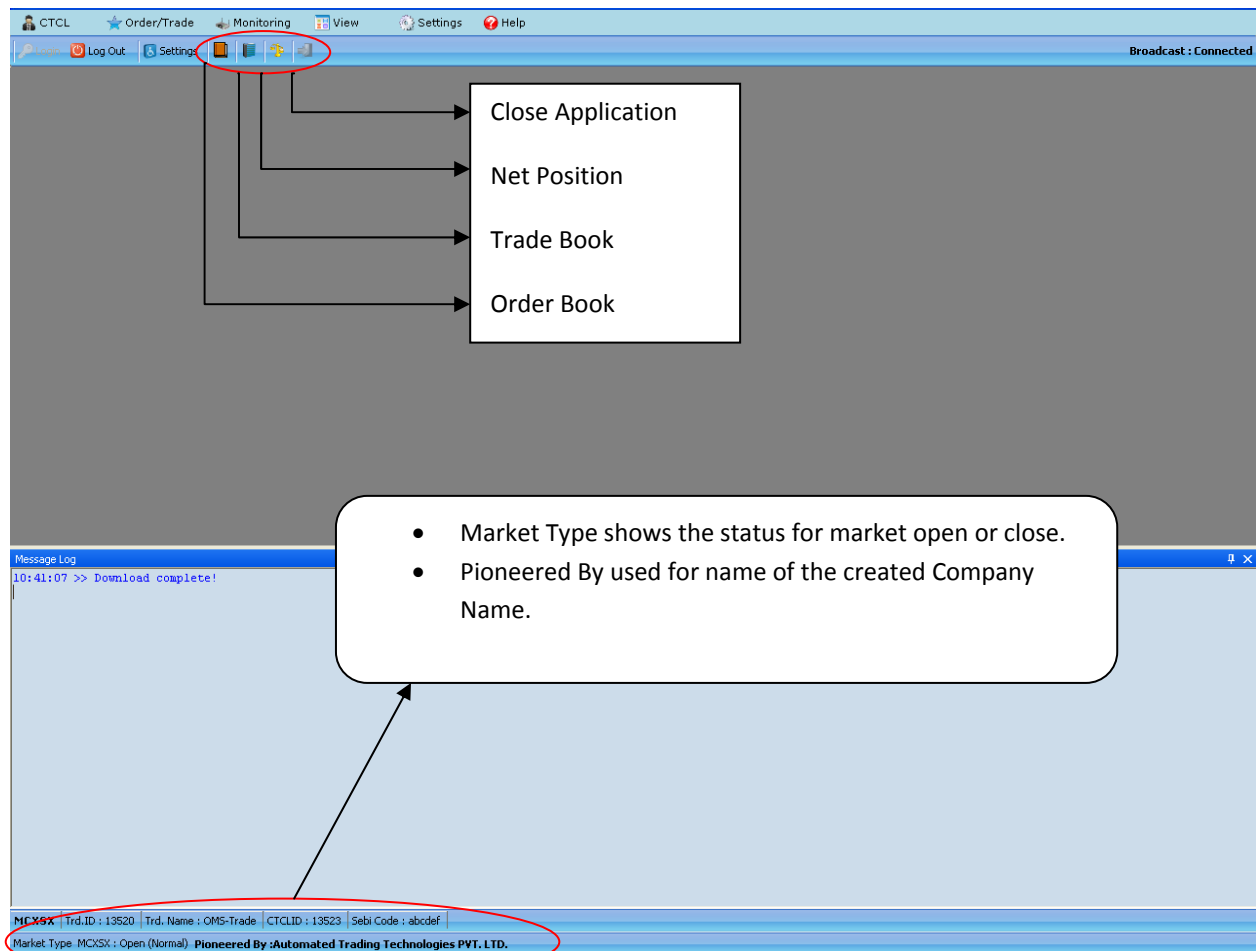
AUTOMATED TRADING TECHNOLOGIES PVT LTD.

DOCUMENTATION FOR CTCL
FRONT END TRADING MODULE
cTide

Index Page

❖ Main Screen.....	
a. CTCL.....	06
i. Log In.....	07
1. Change Password	
ii. Log Out.....	11
iii. Exit.....	13
b. Order/Trade.....	14
i. Order Entry.....	16
ii. Order Book (F3)	20
iii. Trade Book (F8)	27
c. Monitoring.....	30
i. Market Watch.....	31
ii. Net Position.....	39
iii. Panic Withdrawal.....	41
iv. Market Picture.....	41
d. View.....	43
i. Contract Information.....	44
ii. Bhav Copy.....	46
iii. Portfolio.....	47
iv. Map Clients.....	49
v. Surveillance watch.....	50
vi. Snap Quotes.....	51
vii. Log window.....	52
1. Message Log.....	53
2. Exchange Log	
e. Settings.....	54
i. Application Settings.....	55
ii. Online Backup.....	56
iii. Preferences.....	57
f. Help.....	61

❖ Main screen



Information strips

The information strip is displayed at the bottom most section of the application.

- 1) **MCX'SX:** It shows the Exchange Name.
- 2) **Trading Id:** It shows the Trading Member Id.
- 3) **Trade Name:** It shows the Trading Member Name.
- 4) **CTCL ID:** It shows the CTCL Id .
- 5) **Sebi Code:** It shows the unique code only used for MCX'SX.
- 6) **Market Type:** It shows the type of Market with their current status whether it is open or close and also shows normal or special in bracket i.e. MCX'SX: Open (Normal).
- 7) **Pioneered By:** It shows the Name of the Pioneered Company.

The main window shows the following menus :

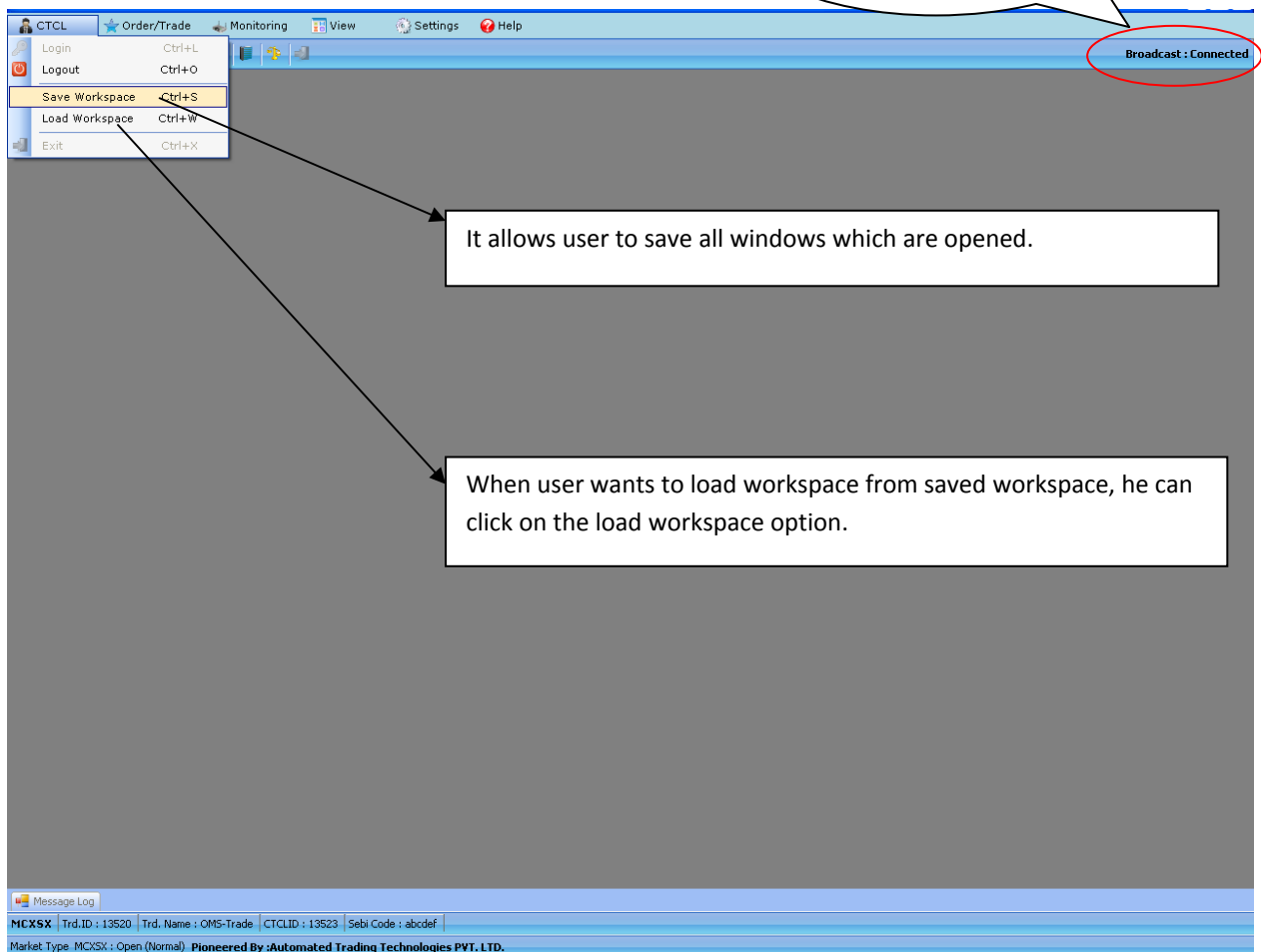
1. CTCL
2. Order/Trade
3. Monitoring
4. View
5. Settings
6. Help

1. CTCL Menu

CTCL menu contains following Options:

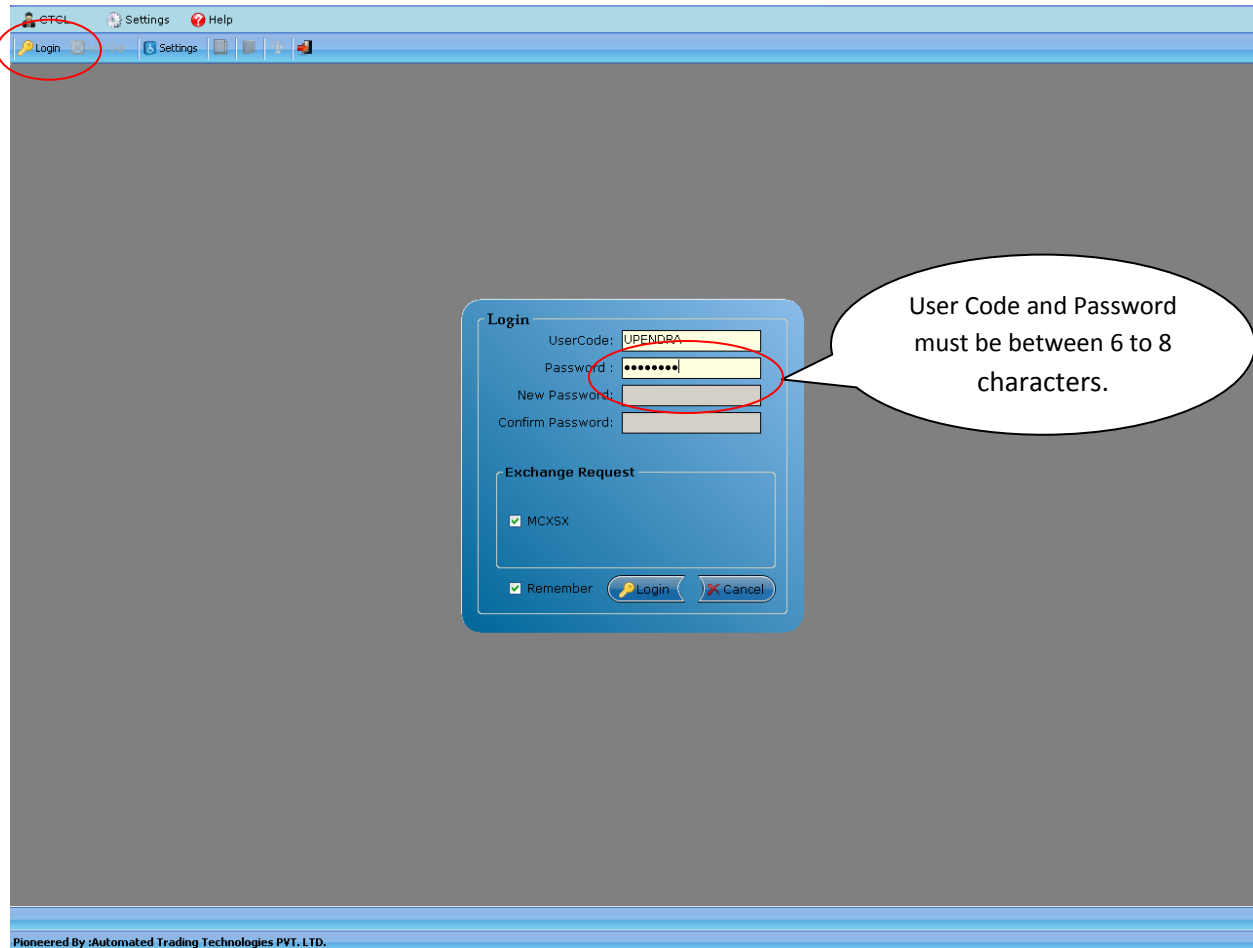
1. Log in
2. Log Out
3. Load Work Space
4. Save Work Space
5. Exit

Here user can view
the Broadcast
Connection Status.

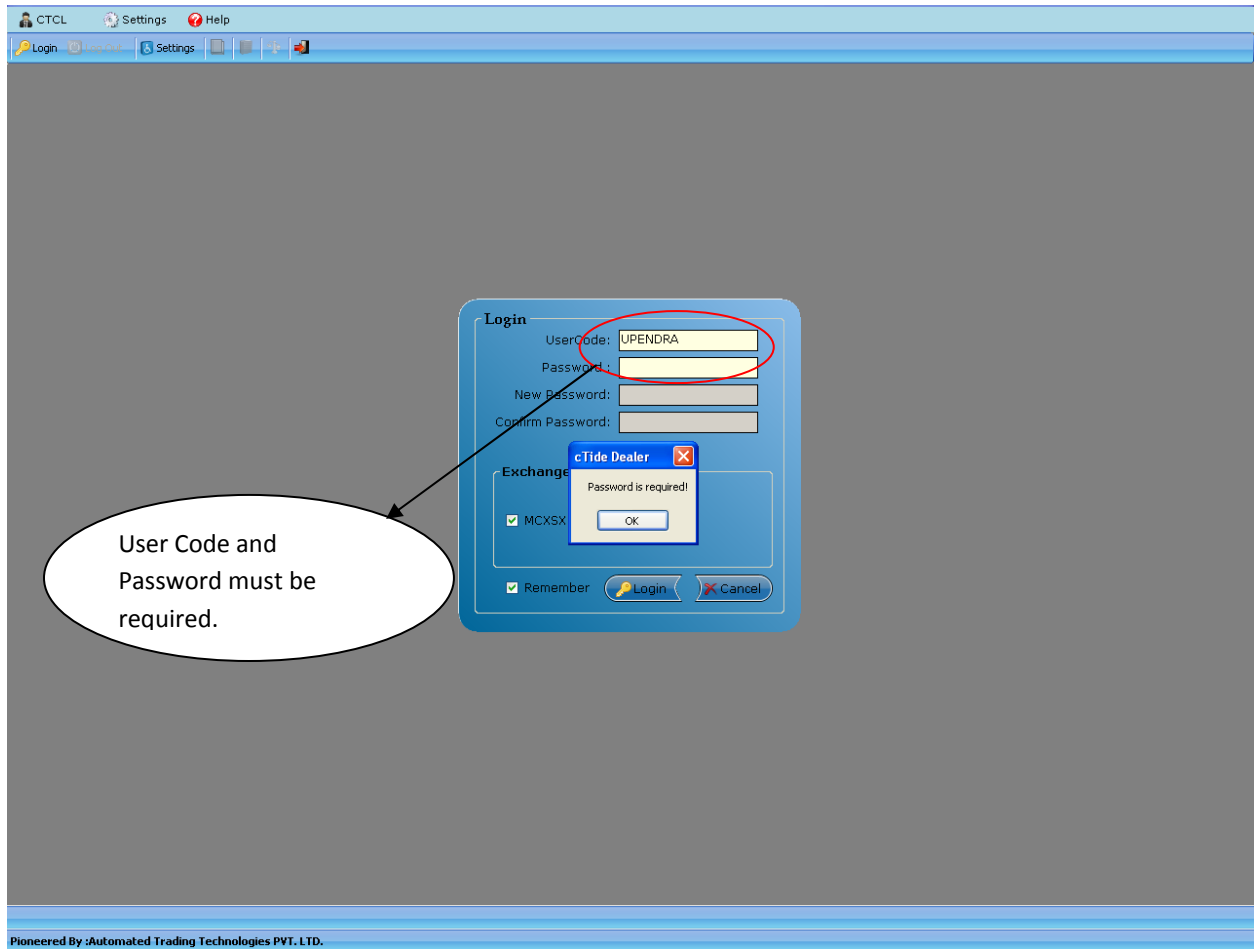


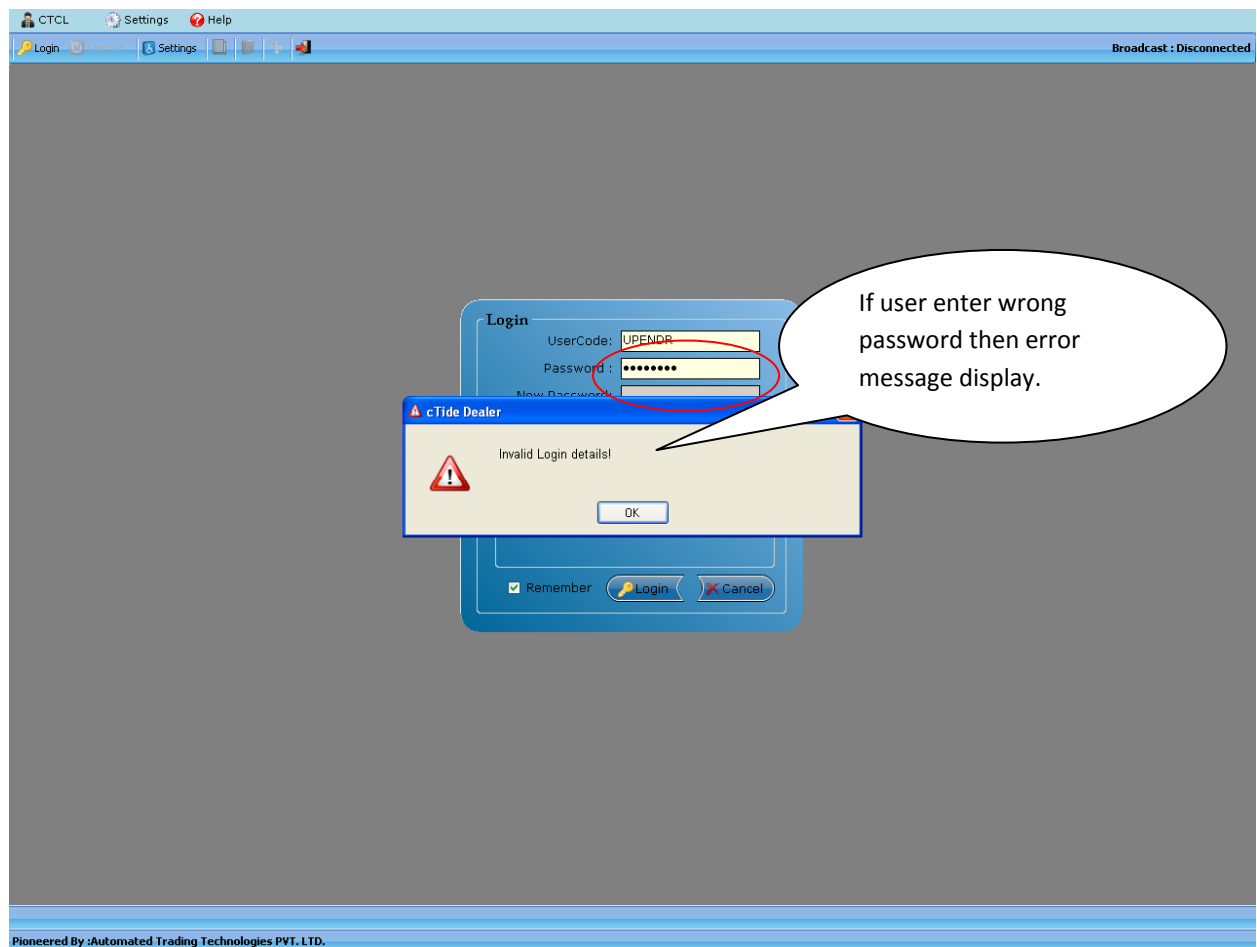
1.1 Log In

CTCL → Login



- Click on the **CTCL menu** to invoke the Login window as well as user can select Login window from title bar.
- Enter User **Code** and **Password** which are created in User Management and click on *Login* button.





1.2 Change Password

Application will ask for change the password, when User login first time.

Login

UserCode: UPENDRA

Password :

New Password:

Confirm Password:

Exchange Request

☒ MCX SX

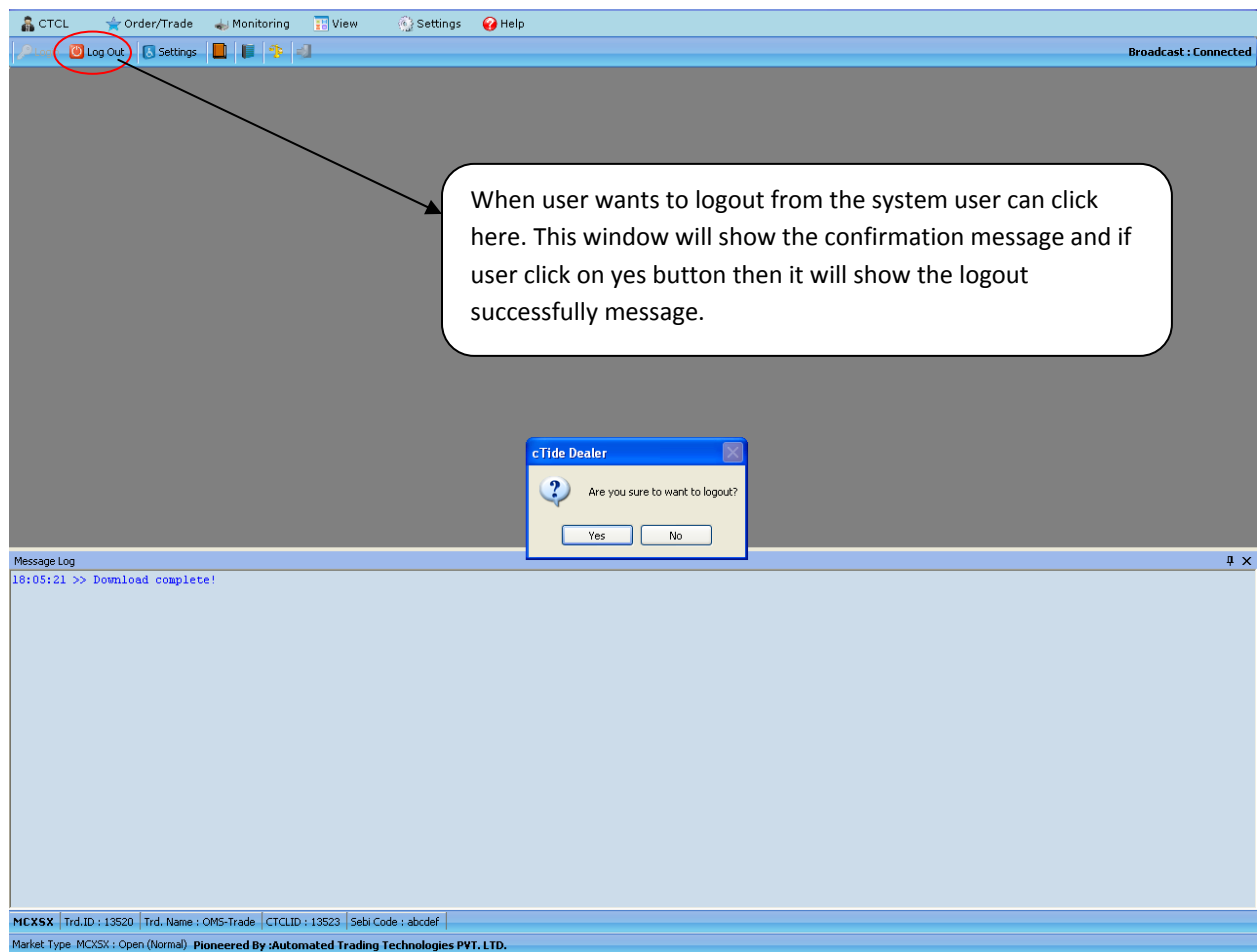
☒ Remember

Pioneered By :Automated Trading Technologies PVT. LTD.

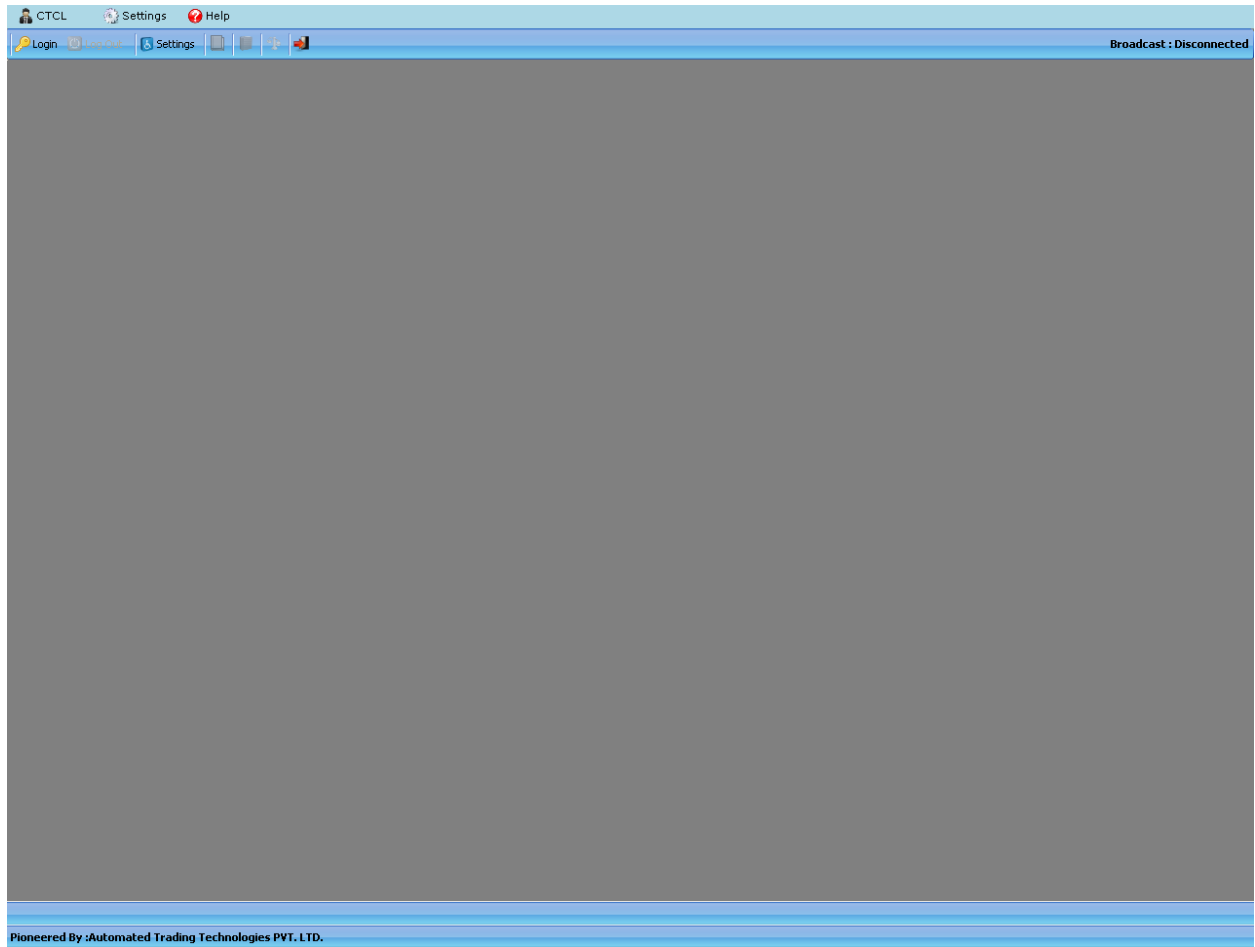
- When user login first time, application will ask for **change Password**. New Password in the text box provided below the Password as well as the same password enter in the confirm password and click the *Login* Button.
- Password should not be same as User code.

1.3 Logout Window

CTCL → Logout

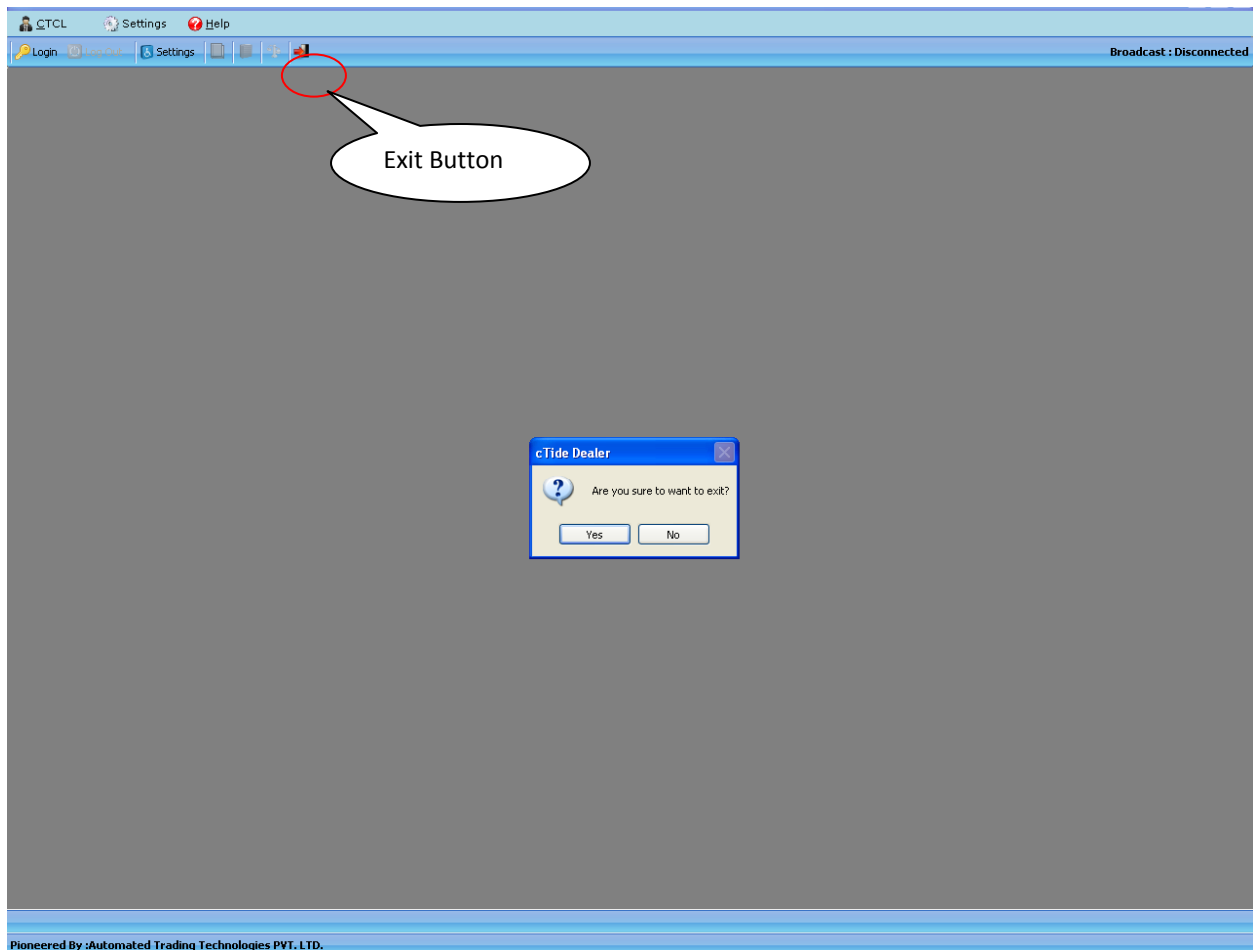


- Click on the **CTCL Menu**, it will invoke the logout menu as well as user can select Logout from the Title bar. This Logout window will allow user for confirmation of Logout from the system.



- This window will show successful message for confirmation of logout from the system. If user selecting Logout menu then, it will automatically disable Order Book, Trade Book and Net Position menu as well as it close all the open windows automatically.

1.4 Exit Window

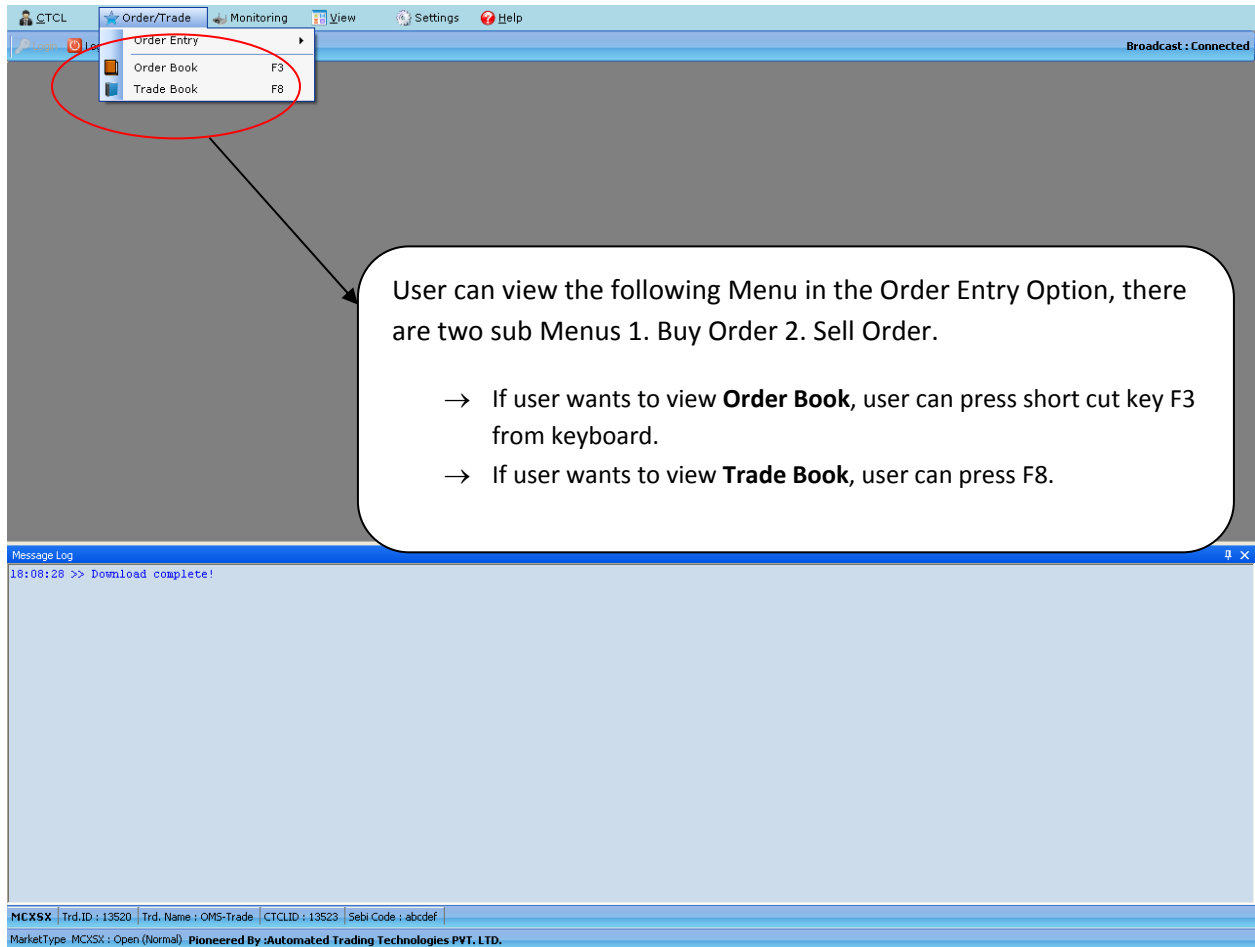


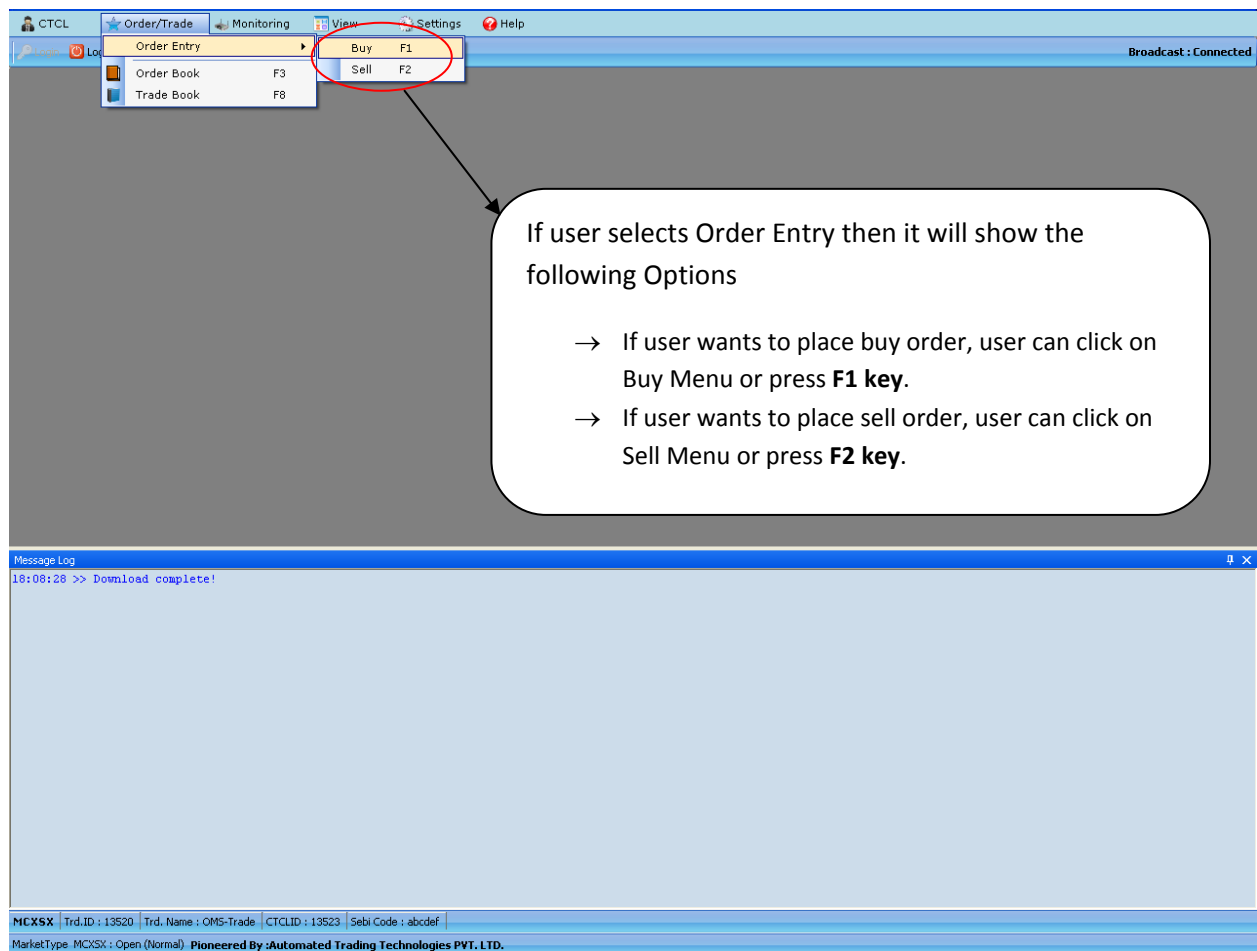
- User can invoke the Exit window from CTCL menu as well as user can select exit button from title bar.
- User can Exit the window only when he will completely Logout.

2. Order Trade Menu

Order/Trade contains following options :

1. Order Entry
2. Order Book (F3)
3. Trade Book (F8)





1.1 Buy Order

Order Entry → Buy Order

Buy Order

Order Entry

Exchange	OrderType	Instr Name	Symbol	ExpiryDate	Strike Price	Opt.Type	TotalQty	Price	O/C	C/U	Dis. Qty	Pro/Cl
MCX	RL	FUTCUR	EUDEC FEB	29Dec2010	0	XX	1	0.0000			0	Pro

Client: RL Price: 0.0000 Validity: Day GTD: 29Dec2010 Remarks: Order

Message Log
18:08:28 >> Download complete!

Here user can select order type.

1. **RL:** Regular Lot
2. **SL:** Stop Loss (order with a trigger price limit).

MCX SX Trd.ID : 13520 Trd. Name : OMS-Trade CTCLID : 13523 Sebi Code : abcdef
MarketType: MCX SX : Open (Normal) Pioneered By :Automated Trading Technologies PVT.LTD.

- This Buy Order window will allow user to make an order with respect to Exchange, Order Type, Order Validity, Symbol, Expiry date.
- User can invoke the Buy order window with short cut **key F1** also.
- Control + Page Up key -- > **High Price**.
- Control + Page Down -- > **Low Price**.

CTCL Order/Trade Monitoring View Settings Help

Log Out Settings

Broadcast : Connected

Buy Order

Order Entry

Exchange	OrderType	Instr.Nam	Symbol	ExpiryDate	Strike Price	Opt.Typ	TotalQty	Price	O/C	C/U	Dis. Qty	Pro/Cli
MCXS	RL	FUTCUR	EURINR	29Dec2010		XX	1	59.8900			0	Pro

Client: Trig. Price: 0.0000 Validity: Day GTD: 13Dec2010 Remarks: Order

Day
IOC
EOS

Here user can select type of validity.

1. **Day**: cancelled by end of trading day
2. **IOC**: Immediate or Cancel
3. **EOS**: cancelled by end of session

CTCL Order/Trade Monitoring View Settings Help

Log Out Settings

Broadcast : Connected

Buy Order

Order Entry

Exchange	OrderType	Instr.Name	Symbol	ExpiryDate	Strike Price	Opt.Type	TotalQty	Price	O/C	C/U	Dis. Qty	Pro/C
MCXSX	RL	FUTCUR	EUDEC FEB	29Dec2010	0	XX	1	0.0000			0	Pro

Client Trig. Price Validity GTD Remarks

0.0000 Day 08Dec2010

Order

Message Log

18:08:28 >> Download complete!

MCXSX Trd.ID : 13520 Trd. Name : OMS-Trade CTCLID : 13523 Sebi Code : abodef

MarketType : MCXSX : Open (Normal) Pioneered By :Automated Trading Technologies PVT. LTD.

User can select Pro/client

If user selects Client option, then client name must be entered.

1.2 Sell Order

Order Entry → Sell Order

CTCL Order/Trade Monitoring View Settings Help Broadcast : Connected

Log Out Settings

Sell order has the same functionality as per the Buy order.

Sell Order

Order Entry

Exchange	OrderType	Instr. Name	Symbol	ExpiryDate	Strike Price	Opt.Type	TotalQty	Price	C/C	C/U	Dis. Qty	Pro/Cli
MCXSY	RL	FUTCUR	EUDEC FEB	29Dec2010	0	XX	1	0.0000	C	U	0	Pro

Client Trig. Price Validity GTD Remarks

0.0000 Day 08Dec2010

Order

Message Log

18:08:28 >> Download complete!

MCXSY Trd.ID : 13520 Trd. Name : OMS-Trade CTCLID : 13523 Sebi Code : abcdef

MarketType: MCXSY : Open (Normal) Pioneered By :Automated Trading Technologies PVT. LTD.

1.3 Order Book

Order/Trade → Order Book

These all are searching criteria for Order Book. User can view the order book according to the searching criteria. Show ALL option allow user to view entire order book.

- This Order Book window show all the information related to order placed by the user. User can view the order book selecting with respect to exchange, symbol, expiry date, Order type, Order status.
- This Order Book information includes:
 - ✓ **Exchange Name:** It shows the name of the exchange.
 - ✓ **Order Type:** It shows the Order type.
 - **RL:** Regular Lot.
 - **SL:** Stop Loss.
 - **ALL:** All types of order.

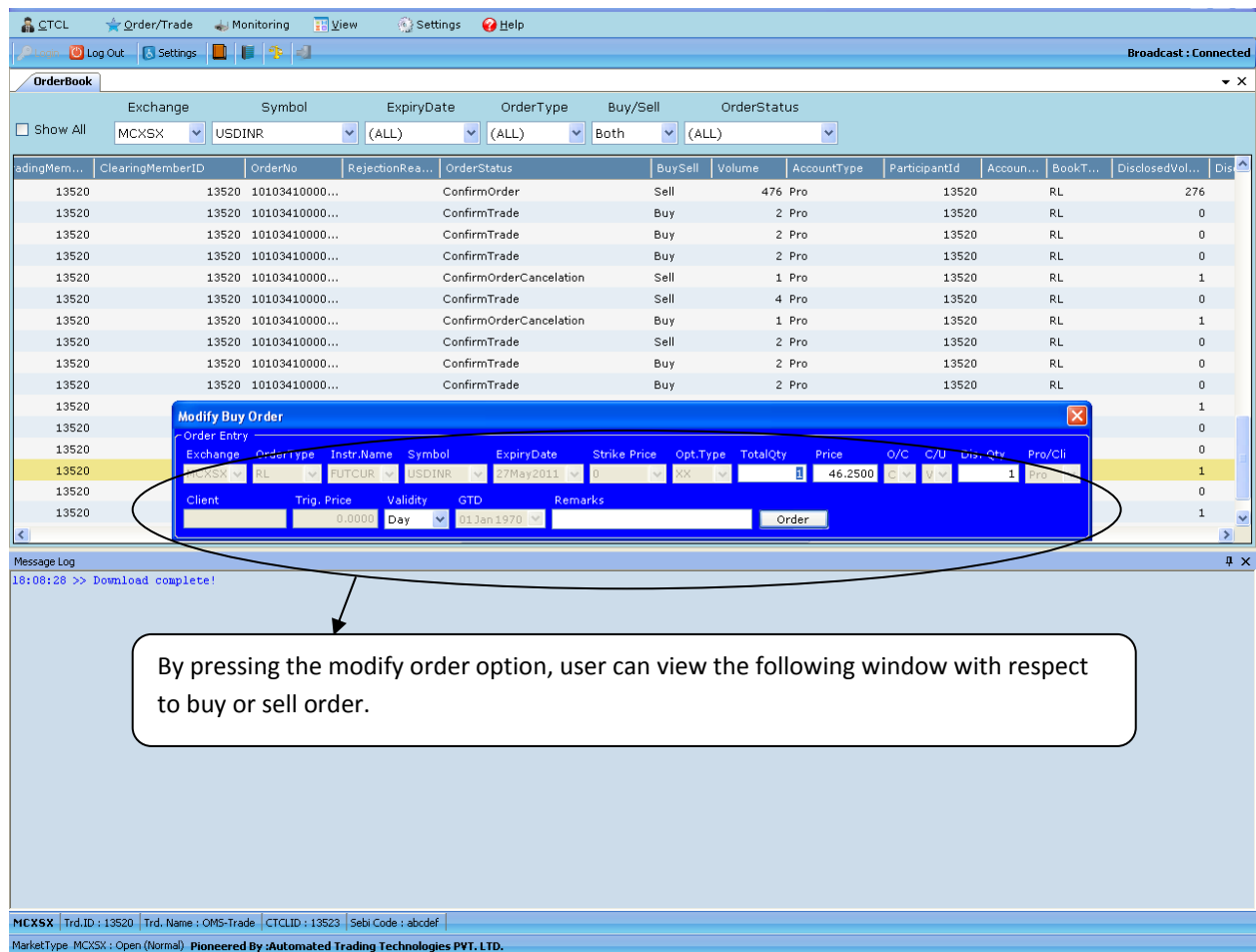
✓ **Order Status:** This field shows the status of the Order. There are different types of order status.

- **Order Confirmed**
- **Order Rejected**
- **Modify Confirmed**
- **Cancel Confirmed**
- **Trade Confirmed**
- **Exchange Square off Trade**
- **Exchange Square off Order**
- **Manager Cancelled Order**
- **Exchange Cancelled Order**

After pressing the search options the information which shown in grid is:

- Exchange Time stamp
- Exchange ID
- Client Order No (Internal Order No)
- Token No
- Security Symbol
- Traded Volume
- Order Price
- Instrument Name
- Expiry Date
- Trigger Time
- Strike Price
- Option Type
- CA level
- Min Fill or AON volume1
- Order Attribute1
- Order No
- Order Status
- Trading No ID
- Buy/Sell
- Volume
- Clearing Member ID
- User Reference Text
- Account Type
- Account No
- Rejection Reason

- Book Type
- Disclose Volume
- Disclosed Volume remaining
- Total Volume Remaining
- Participant ID
- Trigger Price
- Good Till Date
- Entry Date Time
- Create User Id
- Last Modified Time
- Update User Id
- Create Date Time
- Terminal Info
- Remarks
- Update Date Time



- This Order Book window will allow User to modify the existing orders which are confirmed by the Exchange by pressing a right click on a selected script with modify order option or F1.
- It will allow user to modify Buy or Sell Order information.
- User can modify only those orders which are confirmed by the Exchange but not traded.

CTCL Order/Trade Monitoring View Settings Help

Log Out Settings

Broadcast : Connected

OrderBook

Exchange Symbol ExpiryDate OrderType Buy/Sell OrderStatus

Show All MCKSX USDINR (ALL) (ALL) Both (ALL)

TokenNumber	ExchangeNa...	ClientOr...	OrderPrice	SecuritySymbol	TriggerTime	MinFillorAON...	InstrumentN...	LogonId	OrderValidity	ExchangeTi...	ExpiryDate	Strike
200078	MCKSX	1	47.3950	USDINR	07Dec2010 1...	0	FUTCUR	13523	Day	07Dec2010 1...	27Jan2011	
200156	MCKSX	2	45.0000	USDINR	07Dec2010 1...	0	FUTCUR	13523	Day	07Dec2010 1...	29Mar2011	
200156	MCKSX	3	45.0000	USDINR	07Dec2010 1...	0	FUTCUR	13523	Day	07Dec2010 1...	29Mar2011	
200207	MCKSX	20	45.8850	USDINR	07Dec2010 1...	0	FUTCUR	13523	Day	07Dec2010 1...	28Jun2011	
200207	MCKSX	21	45.8850	USDINR	07Dec2010 1...	0	FUTCUR	13523	Day	07Dec2010 1...	28Jun2011	
200074	MCKSX	22	45.7100	USDINR	07Dec2010 1...	0	FUTCUR	13523	Day	07Dec2010 1...	29Dec2010	
200074	MCKSX	23	45.7100	USDINR	07Dec2010 1...	0	FUTCUR	13523	Day	07Dec2010 1...	29Dec2010	
200074	MCKSX	24	45.7100	USDINR	07Dec2010 1...	0	FUTCUR	13523	Day	07Dec2010 1...	29Dec2010	
200074	MCKSX	25	45.7100	USDINR	07Dec2010 1...	0	FUTCUR	13523	Day	07Dec2010 1...	29Dec2010	
200074	MCKSX	26	45.7100	USDINR	07Dec2010 1...	0	FUTCUR	13523	Day	07Dec2010 1...	29Dec2010	
200074	MCKSX	27	45.7100	USDINR	07Dec2010 1...	0	FUTCUR	13523	Day	07Dec2010 1...	29Dec2010	
200074	MCKSX	28	45.7100	USDINR	07Dec2010 1...	0	FUTCUR	13523	Day	07Dec2010 1...	29Dec2010	
200074	MCKSX	29	45.7100	USDINR	07Dec2010 1...	0	FUTCUR	13523	Day	07Dec2010 1...	29Dec2010	

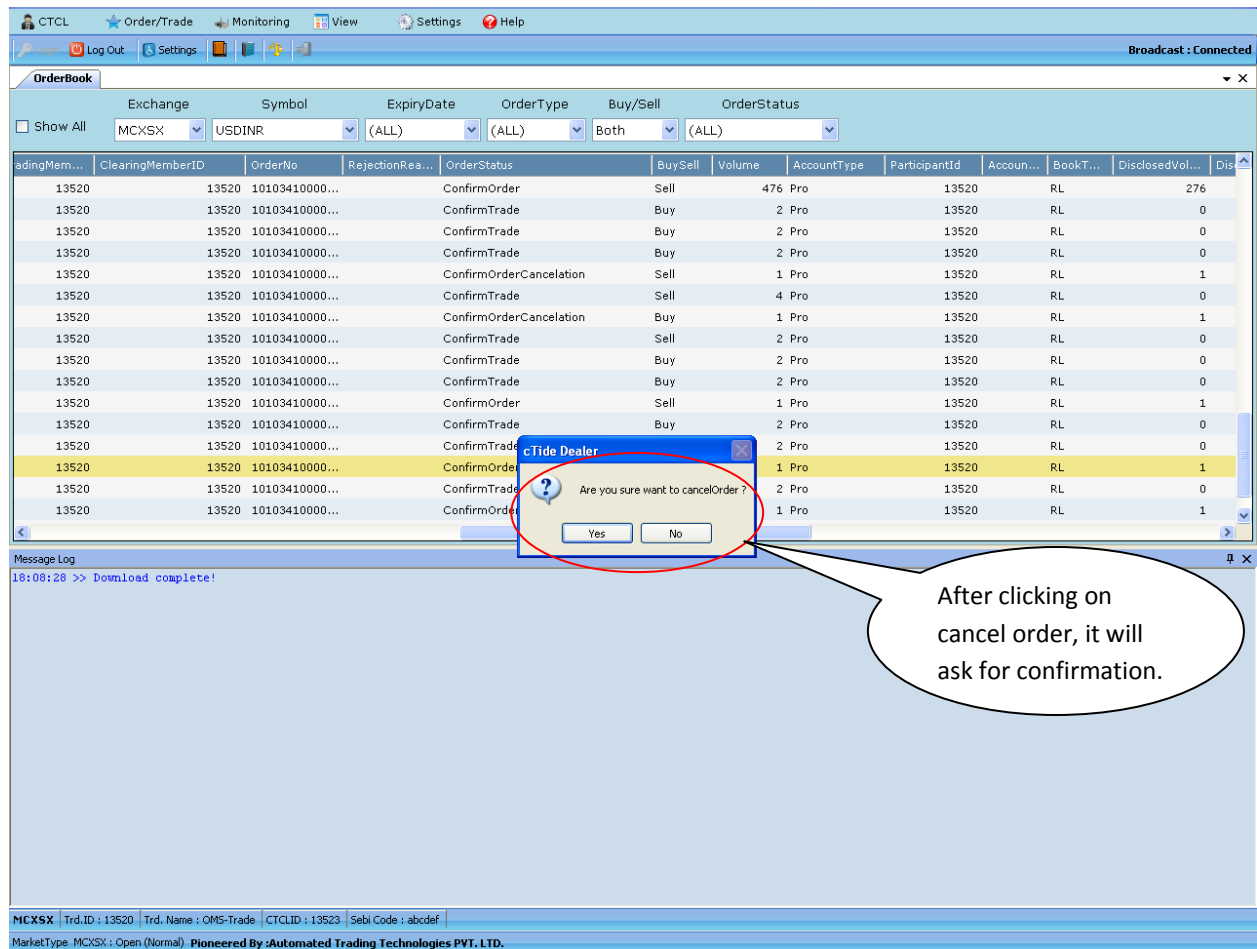
Column Profile
Save Column setting
Modify Order
Cancel Order
Cancel All
Grid Line Style
Export Grid Data
Size To Fit

User can cancel only those orders, which are confirmed by the Exchange but not traded.

→ If user wants to cancel particular order, User can press right click and can select the option **Cancel Order** and if User wants to cancel all Orders, user can select the option Cancel All.

MCKSX Trd.ID : 13520 Trd. Name : OMS-Trade CTCLID : 13523 Sebi Code : abcdef

MarketType : MCKSX : Open (Normal) Pioneer By :Automated Trading Technologies PVT. LTD.



- It invokes the confirmation message for cancellation of order.
- If user press yes button than it will cancel the order otherwise it will not cancel the order.
- Cancel all option allow user to cancel all the Confirmed orders.

CTCL Order/Trade Monitoring View Settings Help

Log Out Settings

Broadcast: Connected

OrderBook

Exchange Symbol ExpiryDate OrderType Buy/Sell OrderStatus

Show All MCKSX USDINR (ALL) (ALL) Both (ALL)

TokenNumber	ExchangeNa...	ClientOr...	OrderPrice	SecuritySymbol	TriggerTime	MinFillorAON...	InstrumentW...	LogonId	OrderValidity	ExchangeTi...	ExpiryDate	Strike
200078	MCKSX	1	47.3950	USDINR	07Dec2010 1...	0	FUTCUR	13523	Day	07Dec2010 1...	27Jan2011	
200156	MCKSX	2	45.0000	USDINR	07Dec2010 1...	0	FUTCUR	13523	Day	07Dec2010 1...	29Mar2011	
200156	MCKSX	3	45.0000	USDINR	07Dec2010 1...	0	FUTCUR	13523	Day	07Dec2010 1...	29Mar2011	
200207	MCKSX	20	45.8850	USDINR	07Dec2010 1...	0	FUTCUR	13523	Day	07Dec2010 1...	28Jun2011	
200207	MCKSX	21	45.8850	USDINR	07Dec2010 1...	0	FUTCUR	13523	Day	07Dec2010 1...	28Jun2011	
200074	MCKSX	22	45.7100	USDINR	07Dec2010 1...	0	FUTCUR	13523	Day	07Dec2010 1...	29Dec2010	
200074	MCKSX	23	45.7100	USDINR	07Dec2010 1...	0	FUTCUR	13523	Day	07Dec2010 1...	29Dec2010	
200074	MCKSX	24	45.7100	USDINR	07Dec2010 1...	0	FUTCUR	13523	Day	07Dec2010 1...	29Dec2010	
200074	MCKSX	25	45.7100	USDINR	07Dec2010 1...	0	FUTCUR	13523	Day	07Dec2010 1...	29Dec2010	
200074	MCKSX	26	45.7100	USDINR	07Dec2010 1...	0	FUTCUR	13523	Day	07Dec2010 1...	29Dec2010	
200074	MCKSX	27	45.7100	USDINR	07Dec2010 1...	0	FUTCUR	13523	Day	07Dec2010 1...	29Dec2010	
200074	MCKSX	28	45.7100	USDINR	07Dec2010 1...	0	FUTCUR	13523	Day	07Dec2010 1...	29Dec2010	
200074	MCKSX	29	45.7100	USDINR	07Dec2010 1...	0	FUTCUR	13523	Day	07Dec2010 1...	29Dec2010	
200074	MCKSX	30	45.7100	USDINR	07Dec2010 1...	0	FUTCUR	13523	Day	07Dec2010 1...	29Dec2010	
200074	MCKSX	31	45.7100	USDINR	07Dec2010 1...	0	FUTCUR	13523	Day	07Dec2010 1...	29Dec2010	
200074	MCKSX	32	45.7100	USDINR	07Dec2010 1...	0	FUTCUR	13523	Day	07Dec2010 1...	29Dec2010	

Message Log

18:19:56 >> MCKSX: 18:19:56 : ConfirmOrderCancellation Buy RL OrdP Rs.46.2500 Day USDINR 27May2011 L:1 Pro : OrdNo=85 ExOrdNo=101034100002085...

18:19:56 >> MCKSX: 18:19:56 : OrderRequestCancellation Buy RL OrdP Rs.46.2500 Day FUTCUR USDINR 27May2011 L:1 Pro : OrdNo=85 ExOrderNo=101034100002085...

18:08:28 >> Download complete

MCKSX Trd.ID : 13520 Trd. Name : OMS-Trade CTCLID : 13523 Sebi Code : abdef

MarketType: MCKSX : Open (Normal) Pioneer By :Automated Trading Technologies PVT. LTD.

If user press yes button, it will show the confirmation message in message log window for Confirm Order Cancellation.

1.4 Trade Book

Order/Trade → Trade Book

These all are searching criteria for trade book. If user select show all option, it show all the orders which are traded today.

ExchangeNo.	TokenNumber	ClientOrderNo	OrderNo	SecuritySymbol	Buy/Sell	QuantityTradedToday	OrderPrice	EntryDateTime	AccountType	OrderValidity	TradePrice
MCX	200078	2	101034200000188	USDINR	Sell	1	47.0250	08Dec2010 1...	Pro	Day	47.0250
MCX	200078	3	101034200000189	USDINR	Buy	1	47.0850	08Dec2010 1...	Pro	Day	47.0850
MCX	200078	4	101034200000190	USDINR	Sell	1	47.0100	08Dec2010 1...	Pro	Day	47.0100
MCX	200078	5	101034200000191	USDINR	Sell	1	47.0000	08Dec2010 1...	Pro	Day	47.0000
MCX	200078	6	101034200000192	USDINR	Sell	1	46.9800	08Dec2010 1...	Pro	Day	46.9800
MCX	200078	7	101034200000193	USDINR	Sell	1	46.9650	08Dec2010 1...	Pro	Day	46.9650
MCX	200078	8	101034200000194	USDINR	Sell	1	46.9000	08Dec2010 1...	Pro	Day	46.9000
MCX	200078	9	101034200000195	USDINR	Sell	1	46.9000	08Dec2010 1...	Pro	Day	46.9000
MCX	200078	10	101034200000196	USDINR	Sell	1	46.9000	08Dec2010 1...	Pro	Day	46.9000
MCX	200078	11	101034200000197	USDINR	Buy	1	46.9000	08Dec2010 1...	Pro	Day	46.9000
MCX	200078	12	101034200000198	USDINR	Buy	1	46.9000	08Dec2010 1...	Pro	Day	46.9000
MCX	200078	13	101034200000199	USDINR	Buy	1	47.1000	08Dec2010 1...	Pro	Day	47.1000
MCX	200078	14	101034200000200	USDINR	Buy	1	47.1150	08Dec2010 1...	Pro	Day	47.1150
MCX	200078	15	101034200000201	USDINR	Buy	1	47.1300	08Dec2010 1...	Pro	Day	47.1300

MCX: Trd.ID : 13520 | Trd. Name : OMS-Trade | CTCLID : 13523 | Sebi Code : abodef
Market Type : MCX: Open (Normal) | Pioneered By : Automated Trading Technologies PVT. LTD.

- This Trade Book window will show all the information related to order confirmed by the exchange and converted into trade.
- User can view the information selecting with respect to exchange, Order type as well as Buy/Sell selected from the combo box.

After pressing the search options the information which shown in grid is:

- Exchange ID
- Token No
- Security Symbol
- Account No
- Client Order No (Internal Order No)
- Order No (Exchange Order No)
- Buy sell
- Disclosed Volume
- Volume
- Disclosed Volume Remaining
- Good Till Date
- Quantity Traded Today
- Total Volume Remaining
- Order Price
- Trade Price
- Entry Date Time
- Trade No
- Counter Trade Order No
- Last Modified Time
- Min Fill or AON volume1
- Instrument Name
- Account Type
- Order Attribute One
- Expiry Date
- User Reference type
- Strike Price
- Trade Time
- Option Type
- Spread Price
- CA level
- Spread instrument Identifier
- Participant ID
- Book Type
- Traded Volume
- New Volume
- Old Account No
- Participant Clearing Member ID
- Old Participant Id
- Institution Remark
- Session ID

CTCL Order/Trade Monitoring View Settings Help

Log Out Settings

Broadcast : Connected

Trade Book

Exchange Symbol ExpiryDate Buy/Sell

Show All MCX SX USDINR (ALL) Both

ExchangeNa...	TokenNumber	ClientOrderNo	SecuritySym...	BuySell	AccountNo	DisclosedVol...	QuantityTrad...	OrderPrice	EntryDateTime	AccountType	OrderValidity	TradePr
MCX SX	200078	1	USDINR	Buy	CLIENT	0	1	47.3950	07Dec2010 1...	Client	Day	
MCX SX	200156	2	USDINR	Sell		0	1	45.0000	07Dec2010 1...	Pro	Day	
MCX SX	200074	22	USDINR	Buy		0	1	45.7100	07Dec2010 1...	Pro	Day	
MCX SX	200074	23	USDINR	Sell		0	1	45.7100	07Dec2010 1...	Pro	Day	
MCX SX	200074	24	USDINR	Sell		1	1	45.7100	07Dec2010 1...	Pro	Day	
MCX SX	200074	25	USDINR	Sell		1	1	45.7100	07Dec2010 1...	Pro	Day	
MCX SX	200074	26	USDINR	Sell		1	1	45.7100	07Dec2010 1...	Pro	Day	
MCX SX	200074	27	USDINR	Sell		1	1	45.7100	07Dec2010 1...	Pro	Day	
MCX SX	200074	28	USDINR	Sell		1	1	45.7100	07Dec2010 1...	Pro	Day	
MCX SX	200074	28	USDINR	Sell		96	1	45.7100	07Dec2010 1...	Pro	Day	
MCX SX	200074	28	USDINR	Sell		44	1	45.7100	07Dec2010 1...	Pro	Day	
MCX SX	200074	28	USDINR	Sell		97	1	45.7100	07Dec2010 1...	Pro	Day	
MCX SX	200074	28	USDINR	Sell		96	1	45.7100	07Dec2010 1...	Pro	Day	

Column Profile
Save Column setting
Grid Line Style
Export Grid Data
Size To Fit

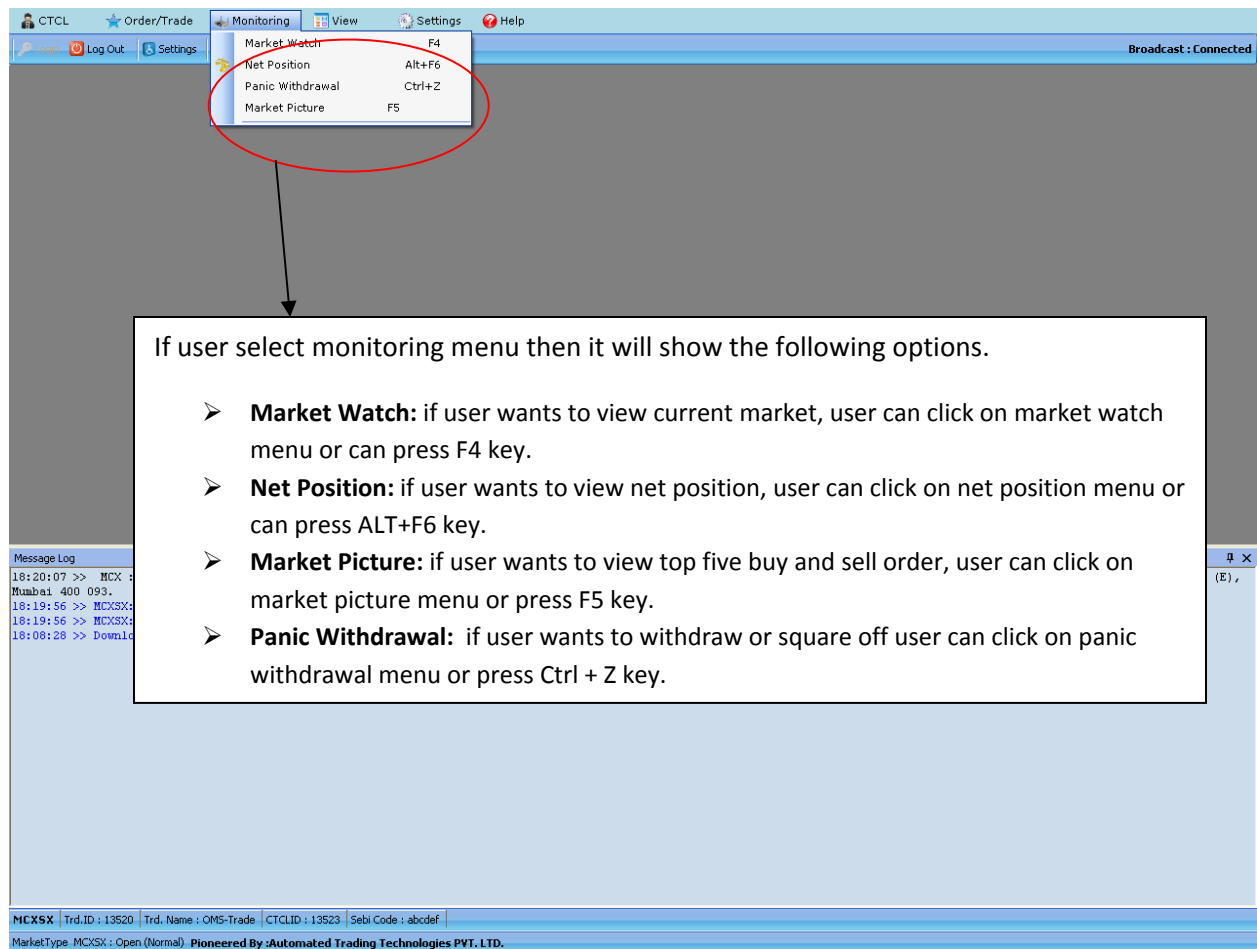
User can get more facility by pressing **right click** in grid.

1. **Column Profile:** It gives facility to change the default settings of columns.
2. **Save column setting:** It saves the column settings after changing in column profile.
3. **Grid Line Style:** It gives facility to change the default gridline style.
4. **Export Grid Data:** It allows user to export all the data to .csv file.
5. **Size to fit:** It allows user to set the size with respect to user's window.

MCX SX Trd.ID : 13520 Trd. Name : OMS-Trade CTCLID : 13523 Sebi Code : abcdef

MarketType : MCX SX : Open (Normal) Pioneered By :Automated Trading Technologies PVT. LTD.

2 Monitoring Menu



The screenshot shows the CTCL software interface. The 'Monitoring' menu is open, displaying four options: 'Market Watch' (F4), 'Net Position' (Alt+F6), 'Panic Withdrawal' (Ctrl+Z), and 'Market Picture' (F5). A red circle highlights the 'Market Watch' option, and an arrow points from it to a text box. The text box contains a list of instructions for each menu option. The bottom of the screen shows a 'Message Log' with timestamps and a status bar with system information.

If user select monitoring menu then it will show the following options.

- **Market Watch:** if user wants to view current market, user can click on market watch menu or can press F4 key.
- **Net Position:** if user wants to view net position, user can click on net position menu or can press ALT+F6 key.
- **Market Picture:** if user wants to view top five buy and sell order, user can click on market picture menu or press F5 key.
- **Panic Withdrawal:** if user wants to withdraw or square off user can click on panic withdrawal menu or press Ctrl + Z key.

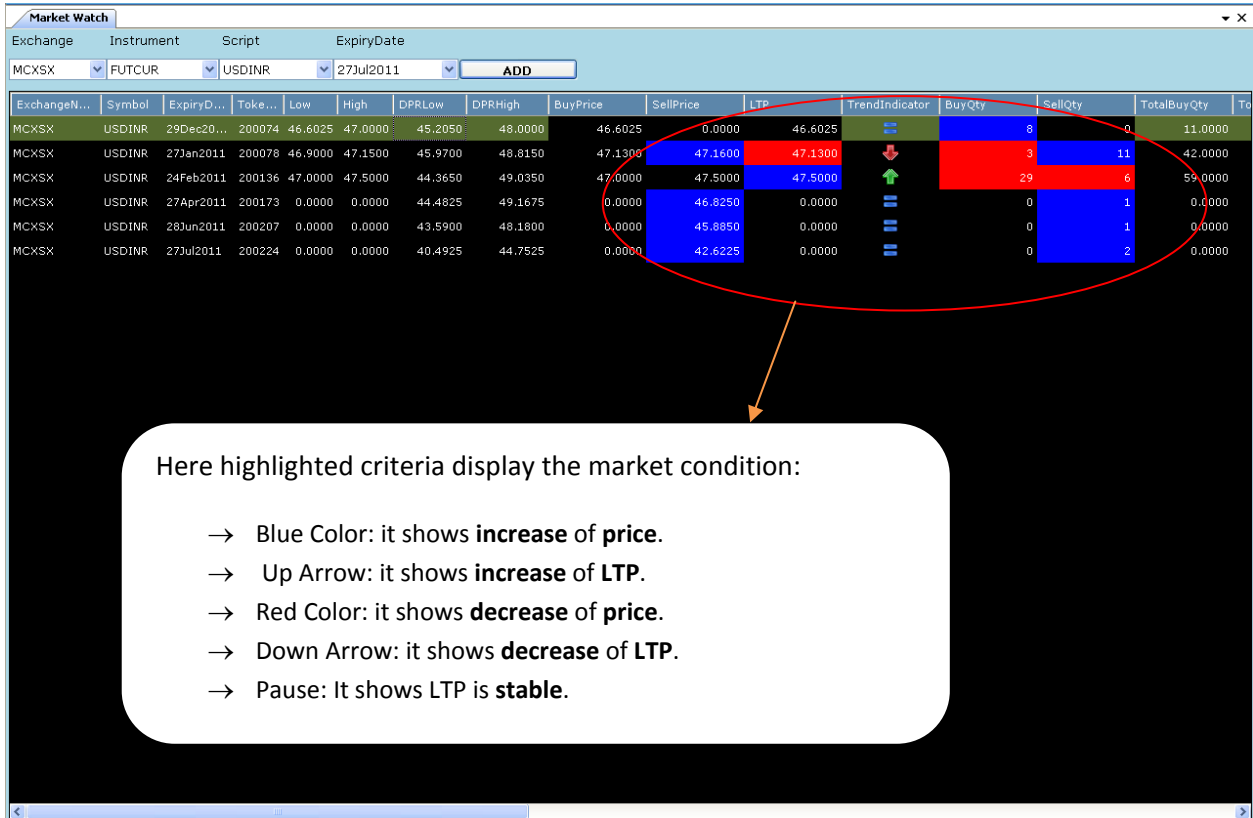
Message Log

18:20:07 >> MCX :
Mumbai 400 093.
18:19:56 >> MCX SX:
18:19:56 >> MCX SX:
18:08:28 >> Downl

MarketType: MCX SX : Open (Normal) Pioneer By :Automated Trading Technologies PVT. LTD.

1.1 Market Watch

Monitoring → Market Watch



Market Watch

Exchange: MCX SX Instrument: FUTCUR Script: USDINR ExpiryDate: 27Jul2011 ADD

ExchangeN...	Symbol	ExpiryD...	Token...	Low	High	DPRLow	DPRHigh	BuyPrice	SellPrice	LTP	TrendIndicator	BuyQty	SellQty	TotalBuyQty	To
MCX SX	USDINR	29Dec20...	200074	46.6025	47.0000	45.2050	48.0000	46.6025	0.0000	46.6025	=	8	0	11.0000	
MCX SX	USDINR	27Jan2011	200078	46.9000	47.1500	45.9700	48.8150	47.1300	47.1600	47.1300	↓	3	11	42.0000	
MCX SX	USDINR	24Feb2011	200136	47.0000	47.5000	44.3650	49.0350	47.0000	47.5000	47.5000	↑	29	6	59.0000	
MCX SX	USDINR	27Apr2011	200173	0.0000	0.0000	44.4825	49.1675	0.0000	46.8250	0.0000	=	0	1	0.0000	
MCX SX	USDINR	28Jun2011	200207	0.0000	0.0000	43.5900	48.1800	0.0000	45.8850	0.0000	=	0	1	0.0000	
MCX SX	USDINR	27Jul2011	200224	0.0000	0.0000	40.4925	44.7525	0.0000	42.6225	0.0000	=	0	2	0.0000	

Here highlighted criteria display the market condition:

- Blue Color: it shows **increase** of price.
- Up Arrow: it shows **increase** of LTP.
- Red Color: it shows **decrease** of price.
- Down Arrow: it shows **decrease** of LTP.
- Pause: It shows LTP is **stable**.

- This **Market Watch window** shows all the information related to current position of market. User can view the information selected with respect to Exchange, Script, Instrument as well as Expiry date.
- Market watch gives the **extra facility** which includes:
 - Drag and Drop column facility.
 - User can press the insert key from the keyboard for inserting the script in market watch same as user can press the Delete key for deleting the script from market watch.
 - If user will be logout and after again login still user can view the all market watch scripts which are added previous time.
 - User can also send the orders of Buy and Sell from market watch.
 - User can view the form of Order Entry of Buy and Sell by pressing F1 or F2 from the market watch on selected row as well as user can press + key for buy and – key for sell.

➤ This Market Watch includes following fields:

- Exchange Name
- Instrument Name
- Instrument Type
- Option Type
- Token Number
- Symbol
- Expiry Date
- Strike Price
- DPR high
- DPR Low
- High
- Low
- Buy Price
- Sell Price
- LTP
- Buy Qty
- Sell Qty
- Total Buy Qty
- Total Sell Qty
- Price Tick
- Total Traded value
- Total QTY Traded
- Total Trades
- Average Traded Price
- Net Change
- Open Price
- Close Price
- Life Time High
- Life Time Low
- Max Single Transaction QTY
- Max Single Transaction value
- Open Interest
- Last Traded Qty
- Last Trade Time
- Last Update Time
- Change
- Trend Indicator

Market Watch

Exchange	Instrument	Script	ExpiryDate												
MCXSX	FUTCUR	USDINR	27Jul2011	ADD											
ExchangeN...	Symbol	ExpiryD...	Take...	Low	High	OPRLow	DPRHigh	BuyPrice	SellPrice	LTP	TrendIndicator	BuyQty	SellQty	TotalBuyQty	To
MCXSX	USDINR	29Dec20...	200074	46.6025	47.0000	45.2050	48.0000	46.6025	0.0000	46.6025	=	8	0	11.0000	
MCXSX	USDINR	27Jan2011	200078	46.9000	47.1500	45.9700	48.8150	47.1300	47.1600	47.1300	↓	3	11	42.0000	
MCXSX	USDINR	24Feb2011	200136	47.0000	47.5000	44.3650	49.0350	47.0000	47.5000	47.5000	↑	29	6	59.0000	
MCXSX	USDINR	27Apr2011	200173	0.0000	0.0000	44.4825	49.1675	0.0000	46.8250	0.0000	=	0	1	0.0000	
MCXSX	USDINR	28Jun2011	200207	0.0000	0.0000	43.5900	48.1800	0.0000	45.8850	0.0000	=	0	1	0.0000	
MCXSX	USDINR	27Jul2011	200224	0.0000	0.0000	40.4925	44.7525			0.0000	=	0	2	0.0000	

Insert Row

Delete Script

Select Portfolio

Save Portfolio

Column Profile

Save Column setting

Grid Line Style

Export Grid Data

Size To Fit

Change Font

Colour Setting

Background Colour

Font Colour

Selected Row

Background Colour

Font Colour

This Market Watch window will allow user to make changes in default color settings by pressing a right click on a script with Color settings option. It will allow user to make changes in default color. This option includes

- ✓ **Selected Row:** This option again includes Back ground color and font color for particular Row.
 - Background Color
 - Font Color

Market Watch

Exchange

Instrument

Script

ExpiryDate

MCXSX

FUTCUR

USDINR

27Jul2011

ADD

Exchange...	Symbol	ExpiryD...	Take...	Low	High	DPRLow	DPRHigh	BuyPrice	SellPrice	LTP	TrendIndicator	BuyQty	SellQty	TotalBuyQty	To
MCXSX	USDINR	29Dec20...	200074	46.6025	47.0000	45.2050	48.0000	46.6025	0.0000	46.6025	=	8	0	11.0000	
MCXSX	USDINR	27Jan2011	200078	46.9000	47.1500	45.9700	48.8150	47.1300	47.1600	47.1300	↓	3	11	42.0000	
MCXSX	USDINR	24Feb2011	200136	47.0000	47.5000	44.3650	49.0350	47.0000	47.5000	47.5000	↑	29	6	59.0000	
MCXSX	USDINR	27Apr2011	200173	0.0000	0.0000	44.4825	49.1675	0.0000	46.8250	0.0000	=	0	1	0.0000	
MCXSX	USDINR	28Jun2011	200207	0.0000	0.0000	43.5900	48.1800			0.0000	=	0	1	0.0000	
MCXSX	USDINR	27Jul2011	200224	0.0000	0.0000	40.4925	44.7525			0.0000	=	0	2	0.0000	

Insert Row

Delete Script

Select Portfolio

Save Portfolio

Column Profile

Save Column setting

Grid Line Style

Export Grid Data

Size To Fit

Change Font

Colour Setting

If user wants to view his own script for daily use purpose, user can use saved portfolio and then user can select that saved portfolio whenever required.

Market Watch

Exchange: MCXSY Instrument: FUTCUR Script: USDINR ExpiryDate: 27Apr2011 ADD

ExchangeNo...	Symbol	ExpiryDate	TokenNum...	Low	High	DPRLow	DPRHigh	BuyPrice	SellPrice	LTP	TrendIndicator	BuyQty	SellQty	TotalBuyQty	TotalSe
MCXSY	USDINR	29Dec2010	200074	46.6...	47.0...	45.2050	48.0000	46.6025	0.0000	46.6025	=	11	0	14.0000	
MCXSY	USDINR	27Jan2011	200078	46.9...	47.1...	45.9700	48.8150	47.1300	47.1600	47.1600	=	3	9	42.0000	
MCXSY	USDINR	24Feb2011	200136	47.0...	47.5...	44.3650	49.0350	47.0000	47.5000	47.5000	=	29	3	59.0000	
MCXSY	USDINR	29Mar2011	200156	44.0...	45.0...						=	4	8	19.0000	
MCXSY	USDINR	27Apr2011	200173	46.8...	46.8...						=	1	0	2.0000	

Portfolio

Enter the Portfolio

MCXSY

OK Cancel

After pressing the save portfolio, user have to enter the name, to save that portfolio.

Message Log

12:12:43 >> MCXSY: 12:12:44 : ConfirmTrade Sell RL TrdP Rs.44.0000 OrdP Rs.44.0000 Day USDINR 29Mar2011 L:1 Pro : OrdNo=31 ExOrdNo=101034200000502 TradeNo=230 ...

12:12:43 >> MCXSY: 12:12:44 : ConfirmOrder Sell RL OrdP Rs.44.0000 Day USDINR 29Mar2011 L:1 Pro : OrdNo=31 ExOrdNo=101034200000502 ...

12:12:42 >> MCXSY: 12:12:42 : OrderRequest Sell RL OrdP Rs.44.0000 Day FUTCUR USDINR 29Mar2011 L:1 Pro : OrdNo=31...

12:12:39 >> MCXSY: 12:12:40 : ConfirmOrder Buy RL OrdP Rs.46.8250 Day USDINR 27Apr2011 L:1 Pro : OrdNo=30 ExOrdNo=101034200000501 ...

12:12:39 >> MCXSY: 12:12:39 : OrderRequest Buy RL OrdP Rs.46.8250 Day FUTCUR USDINR 27Apr2011 L:1 Pro : OrdNo=30...

12:12:37 >> MCXSY: 12:12:38 : ConfirmOrder Buy RL OrdP Rs.46.6025 Day USDINR 29Dec2010 L:1 Pro : OrdNo=29 ExOrdNo=101034200000500 ...

12:12:36 >> MCXSY: 12:12:36 : OrderRequest Buy RL OrdP Rs.46.6025 Day FUTCUR USDINR 29Dec2010 L:1 Pro : OrdNo=29...

12:12:35 >> MCXSY: 12:12:36 : ConfirmOrder Buy RL OrdP Rs.46.6025 Day USDINR 29Dec2010 L:1 Pro : OrdNo=28 ExOrdNo=101034200000499 ...

12:12:34 >> MCXSY: 12:12:34 : OrderRequest Buy RL OrdP Rs.46.6025 Day FUTCUR USDINR 29Dec2010 L:1 Pro : OrdNo=28...

12:12:33 >> MCXSY: 12:12:34 : ConfirmTrade Buy RL TrdP Rs.47.1600 OrdP Rs.47.1600 Day USDINR 27Jan2011 L:1 Pro : OrdNo=27 ExOrdNo=101034200000498 TradeNo=229 ...

12:12:33 >> MCXSY: 12:12:34 : ConfirmOrder Buy RL OrdP Rs.47.1600 Day USDINR 27Jan2011 L:1 Pro : OrdNo=27 ExOrdNo=101034200000498 ...

12:12:32 >> MCXSY: 12:12:32 : OrderRequest Buy RL OrdP Rs.47.1600 Day FUTCUR USDINR 27Jan2011 L:1 Pro : OrdNo=27...

12:12:31 >> MCXSY: 12:12:32 : ConfirmTrade Buy RL TrdP Rs.47.5000 OrdP Rs.47.5000 Day USDINR 24Feb2011 L:1 Pro : OrdNo=26 ExOrdNo=101034200000497 TradeNo=228 ...

12:12:31 >> MCXSY: 12:12:32 : ConfirmOrder Buy RL OrdP Rs.47.5000 Day USDINR 24Feb2011 L:1 Pro : OrdNo=26 ExOrdNo=101034200000497 ...

12:12:31 >> MCXSY: 12:12:31 : OrderRequest Buy RL OrdP Rs.47.5000 Day FUTCUR USDINR 24Feb2011 L:1 Pro : OrdNo=26...

12:12:29 >> MCXSY: 12:12:30 : ConfirmTrade Buy RL TrdP Rs.45.0000 OrdP Rs.45.0000 Day USDINR 29Mar2011 L:1 Pro : OrdNo=25 ExOrdNo=101034200000496 TradeNo=227 ...

12:12:29 >> MCXSY: 12:12:30 : ConfirmOrder Buy RL OrdP Rs.45.0000 Day USDINR 29Mar2011 L:1 Pro : OrdNo=25 ExOrdNo=101034200000496 ...

12:12:29 >> MCXSY: 12:12:29 : OrderRequest Buy RL OrdP Rs.45.0000 Day FUTCUR USDINR 29Mar2011 L:1 Pro : OrdNo=25...

12:12:22 >> MCXSY: 12:12:23 : ConfirmTrade Buy RL TrdP Rs.47.5000 OrdP Rs.47.5000 Day USDINR 24Feb2011 L:1 Pro : OrdNo=24 ExOrdNo=101034200000495 TradeNo=226 ...

12:12:22 >> MCXSY: 12:12:23 : ConfirmOrder Buy RL OrdP Rs.47.5000 Day USDINR 24Feb2011 L:1 Pro : OrdNo=24 ExOrdNo=101034200000495 ...

12:12:22 >> MCXSY: 12:12:22 : OrderRequest Buy RL OrdP Rs.47.5000 Day FUTCUR USDINR 24Feb2011 L:1 Pro : OrdNo=24...

12:12:20 >> MCXSY: 12:12:20 : ConfirmTrade Sell RL TrdP Rs.46.8250 OrdP Rs.46.8250 Day USDINR 27Apr2011 L:1 Pro : OrdNo=5 ExOrdNo=101034200000460 TradeNo=225 ...

12:12:20 >> MCXSY: 12:12:20 : ConfirmOrder Buy RL OrdP Rs.46.8250 Day USDINR 27Apr2011 L:1 Pro : OrdNo=23 ExOrdNo=101034200000494 ...

MCXSY Trd.ID: 13520 Trd. Name: OMS-Trade CTCLID: 13523 Sebi Code: abcdef

Market Type MCXSY: Open (Normal) Pioneered By :Automated Trading Technologies PVT. LTD.

Market Watch

Exchange

Instrument

Script

ExpiryDate

MCX

FX

USDINR

27Apr2011

ADD

Exchange...	Symbol	ExpiryDate	TokenNum...	Low	High	DPRLow	DPRHigh	BuyPrice	SellPrice	LTP	TrendIndicator	BuyQty	SellQty	TotalBuyQty	TotalSe
MCX	USDINR	29Dec2010	200074	46.6...	47.0...	45.2050	48.0000	46.6025	0.0000	46.6025	=	11	0	14.0000	
MCX	USDINR	27Jan2011	200078	46.9...	47.1...	45.9700	48.8150	47.1300	47.1600	47.1600	=	3	9	42.0000	
MCX	USDINR	24Feb2011	200136	47.0...	47.5...	44.3650	49.0350	47.0000	47.5000	47.5000	=	29	3	59.0000	
MCX	USDINR	29Mar2011	200156	44.0...	45.0...	42.8675	47.3775	44.0000	45.0000	44.0000	↓	4	8	19.0000	
MCX	USDINR	27Apr2011	200173	46.8...	46.8...	44.4825	49.1675	46.8250	0.0000	46.8250	=	1	0	2.0000	

cTide Dealer

Portfolio saved successfully

OK

Message Log

12:12:43 >> MCX: 12:12:44 : ConfirmTrade Sell RL TrdP Rs.44.0000 OrdP Rs.44.0000 Day USDINR 29Mar2011 L:1 Pro : OrdNo=101034200000497 TradeNo=228 ...
12:12:42 >> MCX: 12:12:44 : ConfirmOrder Sell RL OrdP Rs.44.0000 Day USDINR 29Mar2011 L:1 Pro : OrdNo=31 ExOrdNo=101034200000498 ...
12:12:39 >> MCX: 12:12:40 : ConfirmOrder Buy RL OrdP Rs.46.8250 Day USDINR 27Apr2011 L:1 Pro : OrdNo=30 ExOrdNo=101034200000499 ...
12:12:39 >> MCX: 12:12:39 : OrderRequest Buy RL OrdP Rs.46.8250 Day USDINR 27Apr2011 L:1 Pro : OrdNo=30 ...
12:12:37 >> MCX: 12:12:38 : ConfirmOrder Buy RL OrdP Rs.46.6025 Day USDINR 29Dec2010 L:1 Pro : OrdNo=29 ExOrdNo=101034200000497 ...
12:12:36 >> MCX: 12:12:36 : OrderRequest Buy RL OrdP Rs.46.6025 Day FUTCUR USDINR 29Dec2010 L:1 Pro : OrdNo=29 ...
12:12:35 >> MCX: 12:12:36 : ConfirmOrder Buy RL OrdP Rs.46.6025 Day USDINR 29Dec2010 L:1 Pro : OrdNo=28 ExOrdNo=101034200000496 ...
12:12:34 >> MCX: 12:12:34 : OrderRequest Buy RL OrdP Rs.46.6025 Day FUTCUR USDINR 29Dec2010 L:1 Pro : OrdNo=28 ...
12:12:33 >> MCX: 12:12:34 : ConfirmTrade Buy RL TrdP Rs.47.1600 OrdP Rs.47.1600 Day USDINR 27Jan2011 L:1 Pro : OrdNo=27 ExOrdNo=101034200000495 ...
12:12:33 >> MCX: 12:12:34 : ConfirmOrder Buy RL OrdP Rs.47.1600 Day USDINR 27Jan2011 L:1 Pro : OrdNo=27 ExOrdNo=101034200000498 ...
12:12:32 >> MCX: 12:12:32 : OrderRequest Buy RL OrdP Rs.47.1600 Day FUTCUR USDINR 27Jan2011 L:1 Pro : OrdNo=27 ...
12:12:31 >> MCX: 12:12:32 : ConfirmTrade Buy RL TrdP Rs.47.5000 OrdP Rs.47.5000 Day USDINR 24Feb2011 L:1 Pro : OrdNo=26 ExOrdNo=101034200000497 TradeNo=228 ...
12:12:31 >> MCX: 12:12:32 : ConfirmOrder Buy RL OrdP Rs.47.5000 Day USDINR 24Feb2011 L:1 Pro : OrdNo=26 ExOrdNo=101034200000497 ...
12:12:31 >> MCX: 12:12:31 : OrderRequest Buy RL OrdP Rs.47.5000 Day FUTCUR USDINR 24Feb2011 L:1 Pro : OrdNo=26 ...
12:12:29 >> MCX: 12:12:30 : ConfirmTrade Buy RL TrdP Rs.45.0000 OrdP Rs.45.0000 Day USDINR 29Mar2011 L:1 Pro : OrdNo=25 ExOrdNo=101034200000496 TradeNo=227 ...
12:12:29 >> MCX: 12:12:30 : ConfirmOrder Buy RL OrdP Rs.45.0000 Day USDINR 29Mar2011 L:1 Pro : OrdNo=25 ExOrdNo=101034200000496 ...
12:12:29 >> MCX: 12:12:29 : OrderRequest Buy RL OrdP Rs.45.0000 Day FUTCUR USDINR 29Mar2011 L:1 Pro : OrdNo=25 ...
12:12:22 >> MCX: 12:12:23 : ConfirmTrade Buy RL TrdP Rs.47.5000 OrdP Rs.47.5000 Day USDINR 24Feb2011 L:1 Pro : OrdNo=24 ExOrdNo=101034200000495 TradeNo=226 ...
12:12:22 >> MCX: 12:12:23 : ConfirmOrder Buy RL OrdP Rs.47.5000 Day USDINR 24Feb2011 L:1 Pro : OrdNo=24 ExOrdNo=101034200000495 ...
12:12:22 >> MCX: 12:12:22 : OrderRequest Buy RL OrdP Rs.47.5000 Day FUTCUR USDINR 24Feb2011 L:1 Pro : OrdNo=24 ...
12:12:20 >> MCX: 12:12:20 : ConfirmTrade Sell RL TrdP Rs.46.8250 OrdP Rs.46.8250 Day USDINR 27Apr2011 L:1 Pro : OrdNo=5 ExOrdNo=101034200000460 TradeNo=225 ...
12:12:20 >> MCX: 12:12:20 : ConfirmOrder Buy RL OrdP Rs.46.8250 Day USDINR 27Apr2011 L:1 Pro : OrdNo=23 ExOrdNo=101034200000494 ...

MCX

FX

USDINR

27Apr2011

ADD

Market Type

MCX

Open (Normal)

Pioneered By :Automated Trading Technologies PVT. LTD.

After pressing the OK button, user can view the confirmation message of save portfolio successfully.

Market Watch

Exchange

Instrument

Script

ExpiryDate

MCX

FX

USDINR

27Apr2011

ADD

ExchangeN...	Symbol	ExpiryDate	TokenNum...	Low	High	DPRLow	DPRHigh	BuyPrice	SellPrice	LTP	TrendIndicator	BuyQty	SellQty	TotalBuyQty	TotalSe
MCX	USDINR	29Dec2010	200074	46.6...	47.0...	45.2050	48.0000	46.6025	0.0000	46.6025	=	11	0	14.0000	
MCX	USDINR	27Jan2011	200078	46.9...	47.1...	45.9700	48.8150	47.1300	47.1600	47.1600	=	3	9	42.0000	
MCX	USDINR	24Feb2011	200136	47.0...	47.5...	44.3650	49.0350	47.0000	47.5000	47.5000	=	29	3	59.0000	
MCX	USDINR	29Mar2011	200156	44.0...	45.0...	42.8675	47.3775	44.0000	45.0000	44.0000	=	4	8	19.0000	
MCX	USDINR	27Apr2011	200173	46.8...	46.8...	44.4825	49.1675	46.8250	0.0000	46.8250	=	1	0	2.0000	

Select Portfolio

MCX

Message Log

12:12:43 >> MCX: 12:12:44 : ConfirmTrade Sell RL TrdP Rs.44.0000 OrdP Rs.44.0000 Day USDINR 29Mar2011 L:1 Pro : OrdNo=31 F
12:12:43 >> MCX: 12:12:44 : ConfirmOrder Sell RL OrdP Rs.44.0000 Day USDINR 29Mar2011 L:1 Pro : OrdNo=31 F
12:12:42 >> MCX: 12:12:42 : OrderRequest Sell RL OrdP Rs.44.0000 Day FUTCUR USDINR 29Mar2011 L:1 Pro : OrdNo=31 F
12:12:39 >> MCX: 12:12:40 : ConfirmOrder Buy RL OrdP Rs.46.8250 Day USDINR 27Apr2011 L:1 Pro : OrdNo=30 ExOrdNo=101034200000497 TradeNo=228 ...
12:12:39 >> MCX: 12:12:39 : OrderRequest Buy RL OrdP Rs.46.8250 Day FUTCUR USDINR 27Apr2011 L:1 Pro : OrdNo=30 ExOrdNo=101034200000497 TradeNo=228 ...
12:12:37 >> MCX: 12:12:38 : ConfirmOrder Buy RL OrdP Rs.46.6025 Day USDINR 29Dec2010 L:1 Pro : OrdNo=29 ExOrdNo=101034200000497 TradeNo=227 ...
12:12:36 >> MCX: 12:12:36 : OrderRequest Buy RL OrdP Rs.46.6025 Day FUTCUR USDINR 29Dec2010 L:1 Pro : OrdNo=28 ExOrdNo=101034200000497 TradeNo=226 ...
12:12:35 >> MCX: 12:12:36 : ConfirmOrder Buy RL OrdP Rs.46.6025 Day USDINR 29Dec2010 L:1 Pro : OrdNo=28 ExOrdNo=101034200000497 TradeNo=226 ...
12:12:34 >> MCX: 12:12:34 : OrderRequest Buy RL OrdP Rs.46.6025 Day FUTCUR USDINR 29Dec2010 L:1 Pro : OrdNo=28 ExOrdNo=101034200000497 TradeNo=226 ...
12:12:33 >> MCX: 12:12:34 : ConfirmTrade Buy RL TrdP Rs.47.1600 OrdP Rs.47.1600 Day USDINR 27Jan2011 L:1 Pro : OrdNo=27 ExOrdNo=101034200000497 TradeNo=225 ...
12:12:33 >> MCX: 12:12:34 : ConfirmOrder Buy RL OrdP Rs.47.1600 Day USDINR 27Jan2011 L:1 Pro : OrdNo=27 ExOrdNo=101034200000497 TradeNo=225 ...
12:12:32 >> MCX: 12:12:32 : OrderRequest Buy RL OrdP Rs.47.1600 Day FUTCUR USDINR 27Jan2011 L:1 Pro : OrdNo=27 ExOrdNo=101034200000497 TradeNo=225 ...
12:12:31 >> MCX: 12:12:32 : ConfirmTrade Buy RL TrdP Rs.47.5000 OrdP Rs.47.5000 Day USDINR 24Feb2011 L:1 Pro : OrdNo=26 ExOrdNo=101034200000497 TradeNo=228 ...
12:12:31 >> MCX: 12:12:32 : ConfirmOrder Buy RL OrdP Rs.47.5000 Day USDINR 24Feb2011 L:1 Pro : OrdNo=26 ExOrdNo=101034200000497 TradeNo=228 ...
12:12:31 >> MCX: 12:12:31 : OrderRequest Buy RL OrdP Rs.47.5000 Day FUTCUR USDINR 24Feb2011 L:1 Pro : OrdNo=26 ExOrdNo=101034200000497 TradeNo=227 ...
12:12:29 >> MCX: 12:12:30 : ConfirmTrade Buy RL TrdP Rs.45.0000 OrdP Rs.45.0000 Day USDINR 29Mar2011 L:1 Pro : OrdNo=25 ExOrdNo=101034200000496 TradeNo=227 ...
12:12:29 >> MCX: 12:12:30 : ConfirmOrder Buy RL OrdP Rs.45.0000 Day USDINR 29Mar2011 L:1 Pro : OrdNo=25 ExOrdNo=101034200000496 TradeNo=227 ...
12:12:29 >> MCX: 12:12:29 : OrderRequest Buy RL OrdP Rs.45.0000 Day FUTCUR USDINR 29Mar2011 L:1 Pro : OrdNo=25 ExOrdNo=101034200000496 TradeNo=226 ...
12:12:22 >> MCX: 12:12:23 : ConfirmTrade Buy RL TrdP Rs.47.5000 OrdP Rs.47.5000 Day USDINR 24Feb2011 L:1 Pro : OrdNo=24 ExOrdNo=101034200000495 TradeNo=226 ...

MCX

TrdID: 13520

TrdName: OMS-Trade

CTCLID: 13523

SebiCode: abcdef

Market Type MCX: Open (Normal) Pioneered By :Automated Trading Technologies PVT. LTD.

If user wants to open his saved portfolio, user can select that portfolio by pressing right click and then click select portfolio option.

CTCL Order/Trade Monitoring View Settings Help

Log Out Settings

Broadcast: Connected

Market Watch

Exchange Instrument Script ExpiryDate

MCX SX CUR EURINR ADD

Exchange	Instrument	TokenNo	Symbol	ExpiryDate	BuyPrice	SellPrice	LTP	BuyQty	SellQty	DPRHigh	DPRLow	TrendIndicator	High	Low	TotalBuy
MCX SX	FUTCUR	200096	EURINR	29Dec2010	53.0000	54.0000	54.0000	92	63	55.5975	52.3575	▲	54.0000	53.0000	9
MCX SX	FUTCUR													64.3550	
MCX SX	FUTCUR													53.8425	
MCX SX	FUTCUR													45.9850	

Contract information for MCX SX FUTCUR USDINR 29Dec2010

Exchange	Instrument	Option	Script	ExpiryDate	StrikePrice
MCX SX	FUTCUR		USDINR	29Dec2010	

SEARCH

Contract Description : USDINR

Market Lot : 1000 Price Tick : 0.0025 Range : 45.9850 - 48.8300

Information : USDINR U/L Asset : USDINR Permitted To Trade : Permitted

Price Quote Quantity : 1 Price Quote Unit : USD Delivery Unit : USD

Maturity Date : 29Dec2010 Max Order Size : 20000 Max Order Value : Unlimited

Contract Start Date : 29Dec2009 12:00:00 PM Tender Start Date : 29Dec2010 12:00:00 PM Delivery Start Date : 12/29/2010 12:00:00 PM

Contract End Date : 29Dec2010 23:59:59 PM Tender End Date : 29Dec2010 12:00:00 PM Delivery End Date : 12/29/2010 12:00:00 PM

Margin Information

InitialBuyMargin : 0.00 Special Buy Margin Rate : 1.00%

InitialSellMargin : 0.00 Special Sell Margin Rate : 1.00%

InitialMarginSpreadBenefitFlag : Off Specification : NA

Message Log

17:30:00 >> MCX SX : 17:30:00 >> MCX SX : 17:30:00 >> MCX SX : 17:29:53 >> MCX SX : 17:29:52 >> MCX SX : 17:29:48 >> MCX SX : 17:29:48 >> MCX SX : 17:29:47 >> MCX SX : Exchange : 17:29:49 : ConfirmOrder Buy RL OrdP Rs.47.0000 Day FUTCUR USDINR 29Dec2010 L:1 Pro : OrdNo=185 ExOrdNo=101034800005764 17:29:47 >> MCX SX : Admin : 17:29:47 : OrderRequest Buy RL OrdP Rs.47.0000 Day FUTCUR USDINR 29Dec2010 L:1 Pro : OrdNo=185 17:29:44 >> MCX SX : Exchange : 17:29:45 : ConfirmTrade Sell RL TrdP Rs.47.0000 OrdP Rs.47.0000 Day FUTCUR USDINR 29Dec2010 L:1 Pro : OrdNo=145 ExOrdNo=101034800003381 TradeNo=2924 17:29:43 >> MCX SX : Exchange : 17:29:45 : ConfirmOrder Buy RL OrdP Rs.47.0000 (Market) EOS FUTCUR USDINR 29Dec2010 L:1 Pro : OrdNo=184 ExOrdNo=101034800005763 Trade 17:29:43 >> MCX SX : Admin : 17:29:43 : OrderRequest Buy RL OrdP Rs.0.0000 Market FUTCUR USDINR 29Dec2010 L:1 Pro : OrdNo=184 17:29:40 >> MCX SX : Exchange : 17:29:41 : ConfirmTrade Buy RL TrdP Rs.54.0000 OrdP Rs.54.0000 (Market) EOS FUTCUR EURINR 29Dec2010 L:1 Pro : OrdNo=183 ExOrdNo=101034800005762 Trade 17:29:39 >> MCX SX : Exchange : 17:29:41 : ConfirmOrder Buy RL OrdP Rs.54.0000 (Market) EOS FUTCUR EURINR 29Dec2010 L:1 Pro : OrdNo=183 ExOrdNo=101034800005762 Trade 17:29:39 >> MCX SX : Admin : 17:29:39 : OrderRequest Buy RL OrdP Rs.0.0000 Market FUTCUR EURINR 29Dec2010 L:1 Pro : OrdNo=183 17:29:35 >> MCX SX : Exchange : 17:29:37 : ConfirmTrade Sell RL TrdP Rs.47.0000 OrdP Rs.47.0000 Day FUTCUR USDINR 29Dec2010 L:1 Pro : OrdNo=145 ExOrdNo=101034800003381 TradeNo=2922

MCX SX Trd.ID : 13520 Trd.Name : OMS-Trade CTCLID : 13523 Sebi Code : abcdef

MarketType MCX SX : Open (Normal) Pioneer By : Automated Trading Technologies PVT. LTD.

- User can view contract information of individual script by pressing shift + F8 on script from market watch.

1.2 Net Position

Monitoring → Net Position

The screenshot shows the 'Net Position' window with a search bar at the top containing filters for Exchange (MCXSX), Periodicity (Daily), Symbol (ALL), Pro/Client (ALL), and Account No. Below the search bar is a table with columns: TokenNo, Symbol, Exchange, InstrumentN..., OptionType, StrikePrice, ExpiryDate, SettlementPr..., BQty, BAmount, BAv, SQty, and SAmount. A red circle highlights the search criteria. A right-click context menu is open over the table, listing options: Column Profile, Save Column Profile, Grid (checked), Export To CSV, Size To Fit, SquareOff, Daily NetPosition (checked), and Expiry NetPosition. Two callouts provide instructions: one pointing to the search criteria stating 'All these are searching criteria for Net Position.', and another pointing to the context menu stating 'User can view all these menus by pressing right click.'

TokenNo	Symbol	Exchange	InstrumentN...	OptionType	StrikePrice	ExpiryDate	SettlementPr...	BQty	BAmount	BAv	SQty	SAmount
200074	USDINR	MCXSX	FUTCUR	XX	0.0000	29Dec2010	0.0000	2304	108,969,767....	47.2959	2038	96,278,342
200078	USDINR	MCXSX	FUTCUR	XX	0.0000	27Jan2011	0.0000	1	47,395.0000	47.3950	0	0.00
200156	USDINR	MCXSX	FUTCUR	XX	0.0000	29Mar2011	0.0000	3	135,000.0000	45.0000	3	135,000.00
200190	USDINR	MCXSX	FUTCUR	XX	0.0000	29Mar2011	0.0000	1	48,800.0000	48.8000	3	143,460.00
0							0.0000	2309	109,200,962...	0.0000	2044	96,556,800

- This Net Position window will show all the information related to current Net position of market. User can view the information as per the option selected in Exchange, Periodicity, Symbol, Pro/Client as well as Account No from the combo box.
- It will give the same facility included in order book by **pressing right click** like.
 - Column Profile
 - Save Column Profile
 - Grid
 - Export to CSV
 - Size To Fit
 - Daily Net Position
 - Expiry Net Position
 - Square Off

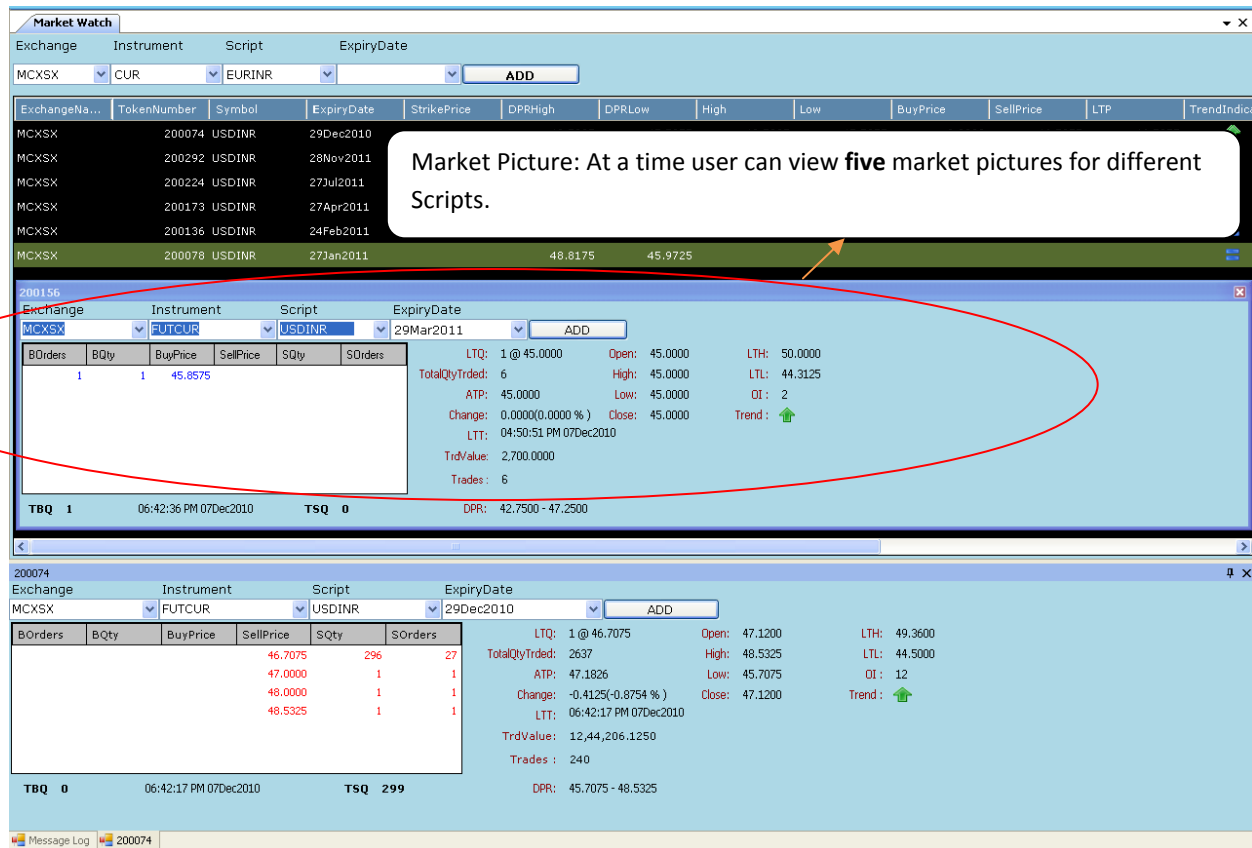
After pressing the search options the information which shown in grid is:

- Token No
- Symbol
- Instrument Name

- Option Type
- Strike Price
- Expiry Date
- Average Lot Price
- BF Quantity
- BF Amount
- CF Quantity
- CF Amount
- Net Quantity
- Net Amount
- Net Average
- Current Market Price
- M2M Position
- M2M Gain
- Exchange
- Expire
- Daily CF Quantity
- Daily CF Amount
- Daily CF Average
- Daily CF Market value
- Daily M2M
- Account Number
- Account type
- Settlement price
- Buy Quantity
- Buy Amount
- Buy Average
- Sell Quantity
- Sell Amount
- Sell Average

1.3 Market Picture

Monitoring → Market Picture



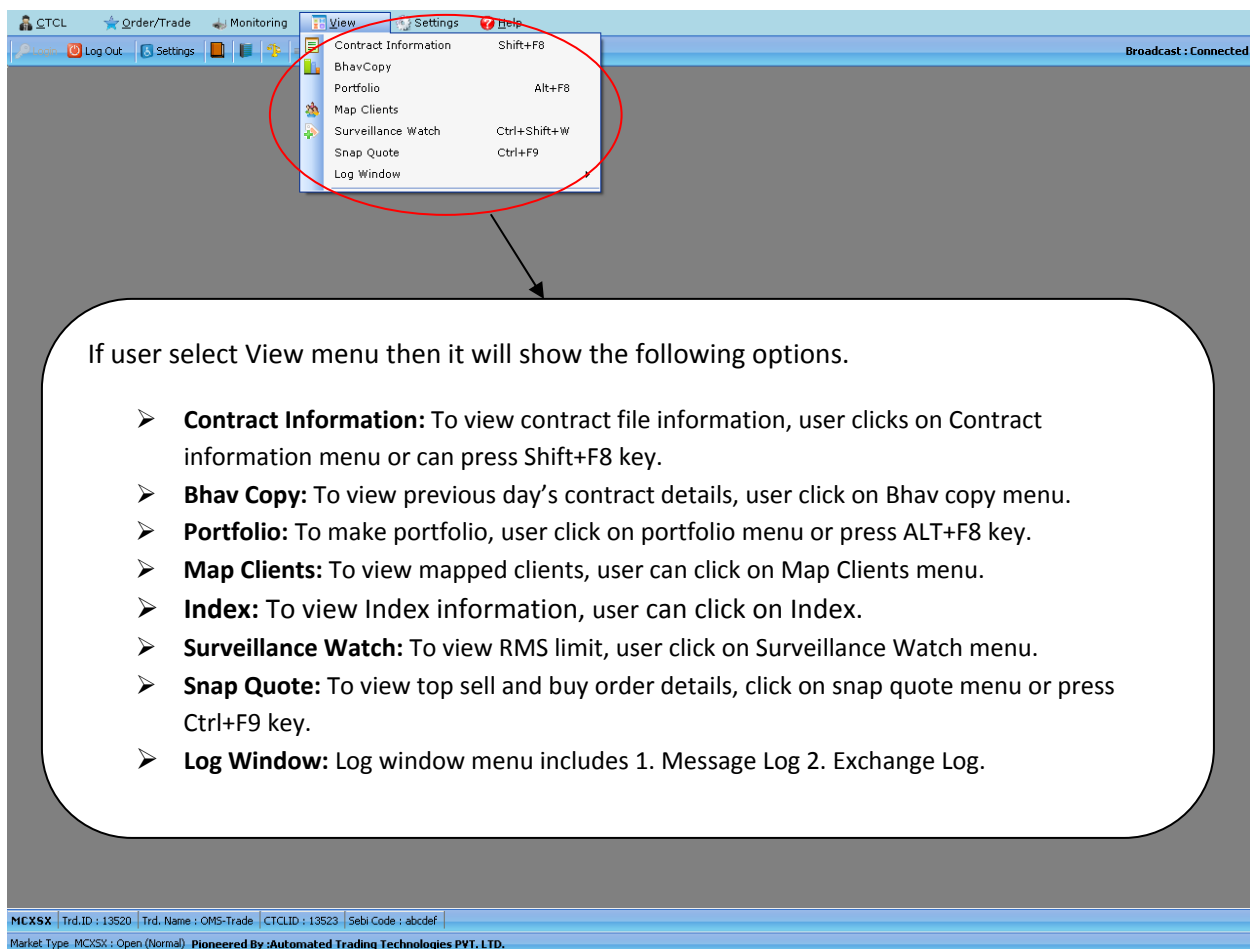
- This Market Picture window will show all the information of best five buyers and seller with respect to Exchange, Instrument, script as well as Expiry Date selected from combo box.
- At a time user can open five windows for the different scripts.
- Blue color shows the Buy Price
- Red color shows the Sell Price
- Market Picture shows the following information :
 - Open
 - Close
 - ATP (Average Trade Price)
 - Change
 - Total Quantity Trade
 - OI (Open Interest)
 - LTH(Life Time High)
 - LTL(Life Time Low)

- LTQ
- LTT(Last Traded Time)
- Low
- High
- Trade Value
- DPR
- LUT(Last Update Time)

3 View menu

View Menu contains following options :

1. Contract Information
2. Bhav Copy
3. Portfolio
4. Map Clients
5. Index
6. Surveillance watch
7. Snap Quote
8. Log window



1.1 Contract Information

View → Contract Information

CTCL Order/Trade Monitoring View Settings Help
Broadcast : Connected

All these are searching criteria for Contract information.

Contract information for MCX SX FUTCUR EURINR29Dec2010

Exchange	Instrument	Option	Script	ExpiryDate	StrikePrice	
MCX SX	FUTCUR		EURINR	29Dec2010		SEARCH

Contract Description : EURINR

Market Lot : 1000	Price Tick : 0.0025	Range : 52.3575 - 55.5975
Information : EURINR	U/L Asset : EURINR	Permitted To Trade : Permitted
Price Quote Quantity : 1	Price Quote Unit : EUR	Delivery Unit : EUR
Maturity Date : 29Dec2010	Max Order Size : 20000	Max Order Value : Unlimited

Contract Start Date : 01Feb2010 06:00:00 AM Tender Start Date : 29Dec2010 12:00:00 PM Delivery Start Date : 12/29/2010 12:00:00 PM
Contract End Date : 29Dec2010 23:59:59 PM Tender End Date : 29Dec2010 12:00:00 PM Delivery End Date : 12/29/2010 12:00:00 PM

Margin Information

InitialBuyMargin : 0.00	Special Buy Margin Rate : 0.30%
InitialSellMargin : 0.00	Special Sell Margin Rate : 0.30%
InitialMarginSpreadBenefitFlag : Off	Specification : NA

MCX SX Trd.ID : 13520 Trd. Name : OMS-Trade CTCLID : 13523 Sebi Code : abcdef
MarketType : MCX SX : Open (Normal) Pioneered By : Automated Trading Technologies PVT. LTD.

→ It shows the contract information with respect to Exchange, Instrument, Options, Script, Expire Date and Strike Price.

Highlighted fields of a **Contract Description** are following:

- **Market Lot**
- **Price Tick**
- **Range**
- **Information**

- U/L Asset
- Permitted To Trade
- Price Quote Quantity
- Delivery Unit
- Price Quote Unit
- Maturity Date
- Max Order Size
- Max Order Value
- Contract start Date
- Tender start Date
- Delivery start Date
- Contract End Date
- Tender End Date
- Delivery End Date

Highlighted fields of a **Margin Information** are following:

- Total Margin (%)
- Delivery Margin (%)
- Tender Margin (%)
- Initial Buy Margin
- Initial Sell Margin
- Special Buy Margin Rate
- Special Sell Margin Rate
- Additional Buy Margin (%)
- Additional Sell Margin (%)
- Initial Margin Spread Benefit Flag
- Specification

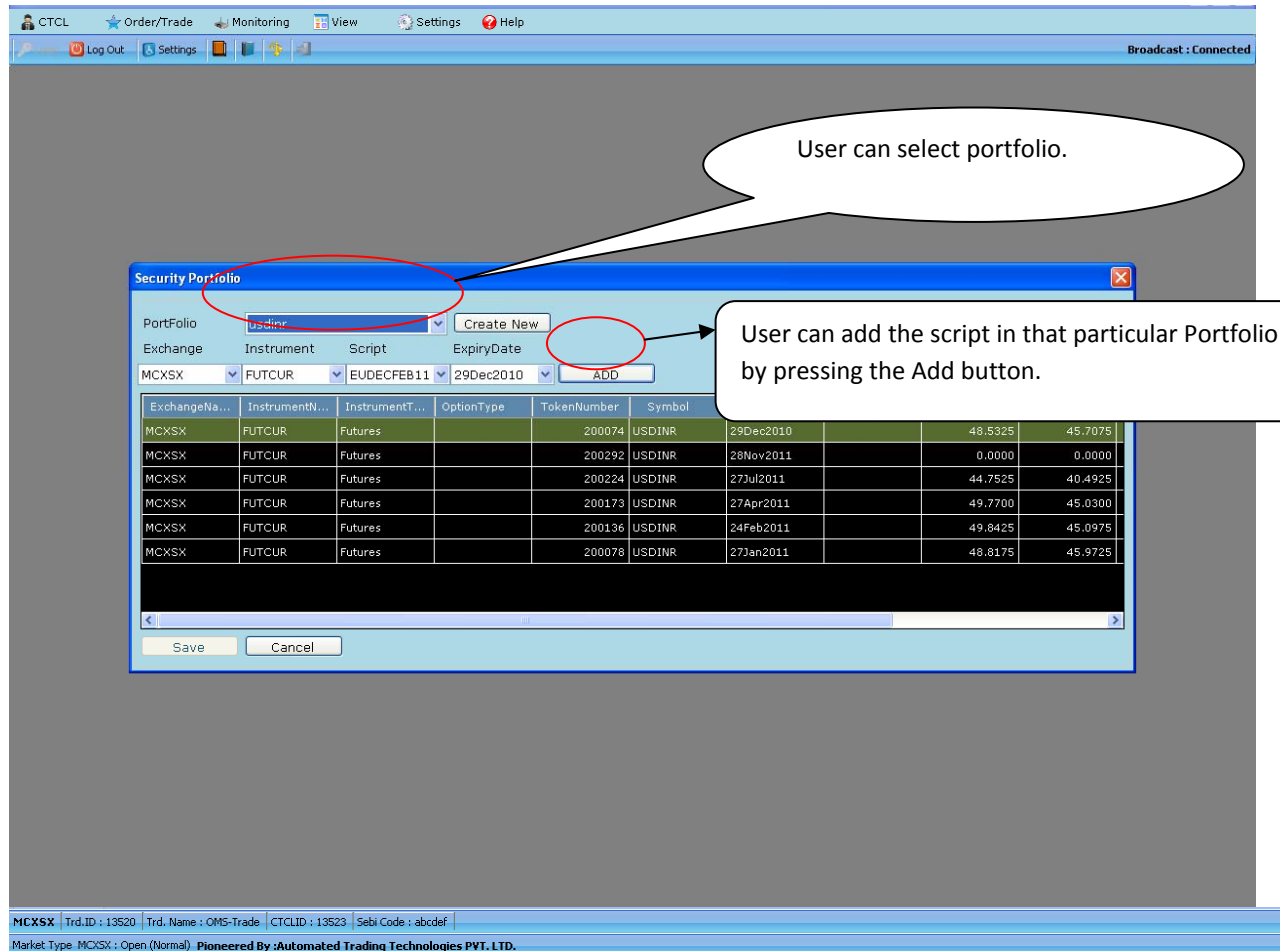
1.2 BhavCopy

The user can click on *BhavCopy* in the View menu, to invoke the BhavCopy window.

BhavCopy												
Exchange : MCXSX												
MarketStatist...	ExchangeNa...	Symbol	MarketType	InstrumentID	InstrumentN...	ExpiryDate	OpenPrice	HighPrice	LowPrice	ClosePrice	PreviousClos...	TotalVol
07Dec2010	MCXSX	GBPINR	NORMAL	Underlying	CUR		0.0000	0.0000	0.0000	70.6140	0.0000	
07Dec2010	MCXSX	JPYINR	NORMAL	Underlying	CUR		0.0000	0.0000	0.0000	54.2700	0.0000	
07Dec2010	MCXSX	USDINR	NORMAL	Underlying	CUR		0.0000	0.0000	0.0000	44.8400	0.0000	
07Dec2010	MCXSX	EURINR	NORMAL	Underlying	FUTCUR	29Dec2010	60.1000	60.1475	59.9250	59.9525	59.9500	
07Dec2010	MCXSX	EURINR	NORMAL	Underlying	FUTCUR	27Jan2011	60.3400	60.4400	60.2300	60.2450	60.2325	
07Dec2010	MCXSX	EURINR	NORMAL	Underlying	FUTCUR	24Feb2011	0.0000	0.0000	0.0000	60.3975	60.3975	
07Dec2010	MCXSX	EURINR	NORMAL	Underlying	FUTCUR	29Mar2011	0.0000	0.0000	0.0000	60.6725	60.6725	
07Dec2010	MCXSX	EURINR	NORMAL	Underlying	FUTCUR	27Apr2011	0.0000	0.0000	0.0000	60.9050	60.9050	
07Dec2010	MCXSX	EURINR	NORMAL	Underlying	FUTCUR	27May2011	0.0000	0.0000	0.0000	61.1225	61.1225	
07Dec2010	MCXSX	EURINR	NORMAL	Underlying	FUTCUR	28Jun2011	0.0000	0.0000	0.0000	61.3450	61.3450	
07Dec2010	MCXSX	EURINR	NORMAL	Underlying	FUTCUR	27Jul2011	0.0000	0.0000	0.0000	61.5350	61.5350	
07Dec2010	MCXSX	EURINR	NORMAL	Underlying	FUTCUR	29Aug2011	0.0000	0.0000	0.0000	61.7300	61.7300	
07Dec2010	MCXSX	EURINR	NORMAL	Underlying	FUTCUR	28Sep2011	0.0000	0.0000	0.0000	61.8925	61.8925	
07Dec2010	MCXSX	EURINR	NORMAL	Underlying	FUTCUR	27Oct2011	0.0000	0.0000	0.0000	62.0375	62.0375	
07Dec2010	MCXSX	EURINR	NORMAL	Underlying	FUTCUR	28Nov2011	0.0000	0.0000	0.0000	62.1775	62.1775	
07Dec2010	MCXSX	GBPINR	NORMAL	Underlying	FUTCUR	29Dec2010	70.8775	71.0600	70.7825	70.8250	70.8150	
07Dec2010	MCXSX	GBPINR	NORMAL	Underlying	FUTCUR	27Jan2011	71.2075	71.2075	71.1600	71.1600	71.2725	
07Dec2010	MCXSX	GBPINR	NORMAL	Underlying	FUTCUR	24Feb2011	0.0000	0.0000	0.0000	71.4150	71.4150	
07Dec2010	MCXSX	GBPINR	NORMAL	Underlying	FUTCUR	29Mar2011	0.0000	0.0000	0.0000	71.7525	71.7525	
07Dec2010	MCXSX	GBPINR	NORMAL	Underlying	FUTCUR	27Apr2011	0.0000	0.0000	0.0000	72.0350	72.0350	
07Dec2010	MCXSX	GBPINR	NORMAL	Underlying	FUTCUR	27May2011	0.0000	0.0000	0.0000	72.2975	72.2975	
07Dec2010	MCXSX	GBPINR	NORMAL	Underlying	FUTCUR	28Jun2011	0.0000	0.0000	0.0000	72.5600	72.5600	
07Dec2010	MCXSX	GBPINR	NORMAL	Underlying	FUTCUR	27Jul2011	0.0000	0.0000	0.0000	72.7775	72.7775	
07Dec2010	MCXSX	GBPINR	NORMAL	Underlying	FUTCUR	29Aug2011	0.0000	0.0000	0.0000	73.0000	73.0000	
07Dec2010	MCXSX	GBPINR	NORMAL	Underlying	FUTCUR	28Sep2011	0.0000	0.0000	0.0000	73.1800	73.1800	
07Dec2010	MCXSX	GBPINR	NORMAL	Underlying	FUTCUR	27Oct2011	0.0000	0.0000	0.0000	73.3425	73.3425	
07Dec2010	MCXSX	GBPINR	NORMAL	Underlying	FUTCUR	28Nov2011	0.0000	0.0000	0.0000	73.4875	73.4875	
07Dec2010	MCXSX	JPYINR	NORMAL	Underlying	FUTCUR	29Dec2010	54.6000	54.7000	54.2750	54.3325	54.5275	
07Dec2010	MCXSX	JPYINR	NORMAL	Underlying	FUTCUR	27Jan2011	54.8600	54.8600	54.6000	54.6700	54.8400	
07Dec2010	MCXSX	JPYINR	NORMAL	Underlying	FUTCUR	24Feb2011	0.0000	0.0000	0.0000	55.0275	55.0275	
07Dec2010	MCXSX	JPYINR	NORMAL	Underlying	FUTCUR	29Mar2011	0.0000	0.0000	0.0000	55.3250	55.3250	
07Dec2010	MCXSX	JPYINR	NORMAL	Underlying	FUTCUR	27Apr2011	0.0000	0.0000	0.0000	55.5725	55.5725	

1.3 Portfolio

View → Portfolio



- User can click on **Portfolio** in the View menu, to invoke the Portfolio window. This window provides the facility to create or Update the portfolio.

Log OutSettingsBroadcast : Connected

Portfolio

usdnr

Create New

Exchange

Instrument

Script

ExpiryDate

MCX SX

FUTCUR

EUDEC FEB11

29Dec2010

ADD

ExchangeNa...	InstrumentN...	InstrumentT...	OptionType	TokenNumber	Symbol	ExpiryDate	StrikePrice	DPRHigh	DPRLow
MCX SX	FUTCUR	Futures		200074	USDINR	29Dec2010		48.5325	45.707
MCX SX	FUTCUR	Futures	XX			29Dec2010		0.0000	0.000
MCX SX	FUTCUR	Futures	XX			29Dec2010		0.0000	0.000
MCX SX	FUTCUR	Futures				28Nov2011		0.0000	0.000
MCX SX	FUTCUR	Futures				27Jul2011		44.7525	40.492
MCX SX	FUTCUR	Futures		200173	USDINR	27Apr2011		49.7700	45.030
MCX SX	FUTCUR	Futures		200136	USDINR	24Feb2011		49.8425	45.097
MCX SX	FUTCUR	Futures		200078	USDINR	27Jan2011		48.8175	45.972

Hide Dealer

Your portfolio is saved.

OK

Save

Cancel

User can save the Portfolio by pressing the Save Button so that it will give the confirmation message of save portfolio successfully.

MCX SX

Trd.ID : 13520

Trd. Name : OMS-Trade

CTCLID : 13523

Sebi Code : abcdef

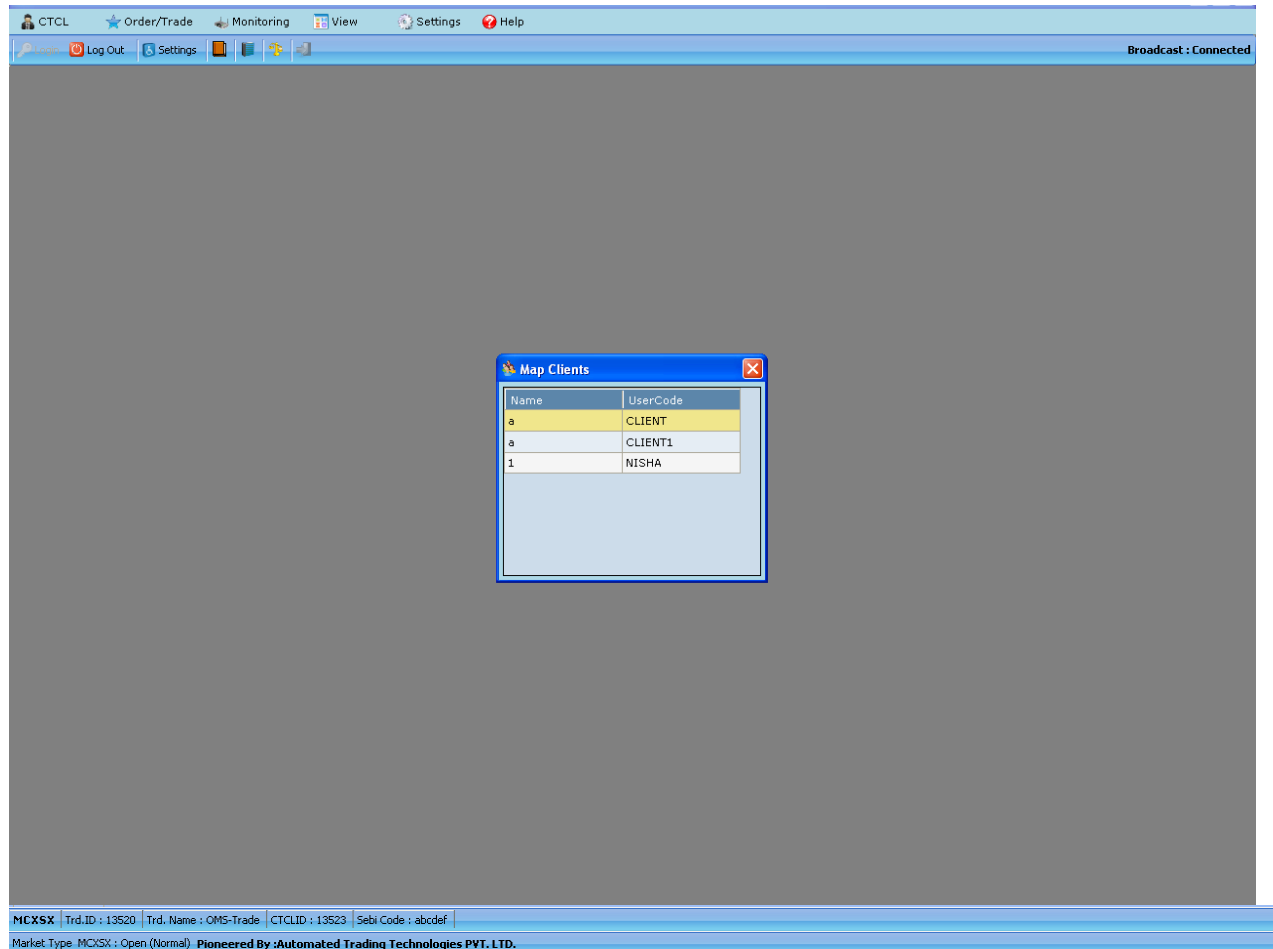
Market Type

MCX SX : Open (Normal)

Pioneered By :Automated Trading Technologies PVT. LTD.

1.4 Map Client

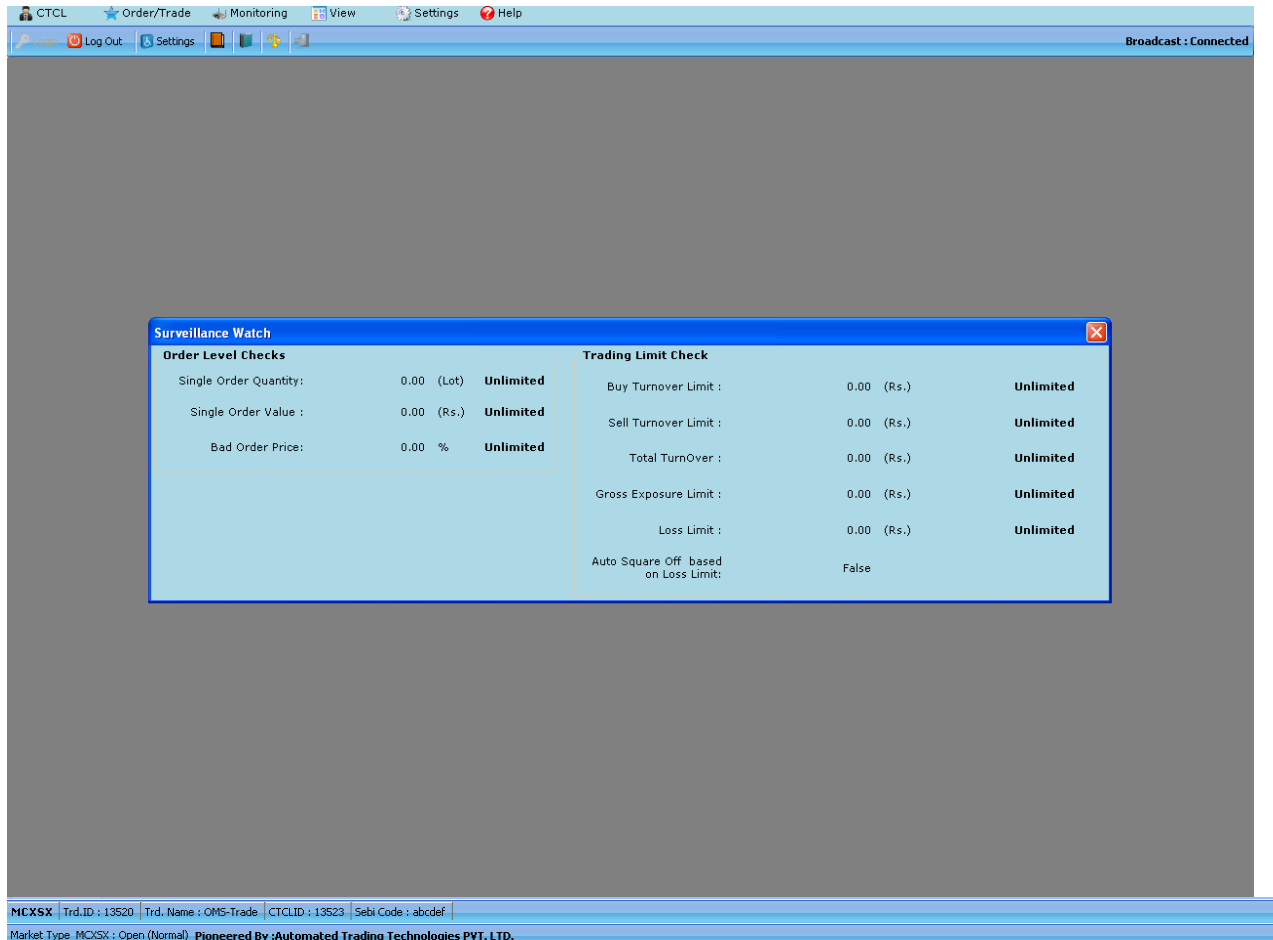
View → Map Client



- This Map Clients window will show the information of clients which are mapped with the User.

1.5 Surveillance Watch

View → Surveillance Watch



- The user can click on **Surveillance watch** in the View menu, to invoke the Surveillance watch window. User can view the limits set by the Admin.

1.6 Snap Quote

View → Snap Quote

Market Watch

Exchange	Instrument	Script	ExpiryDate	ADD
MCX SX	USDINR	29Dec2010	200074	46.6025
MCX SX	USDINR	27Jan2011	200078	46.9000
MCX SX	USDINR	24Feb2011	200136	47.0000
MCX SX	USDINR	29Mar2011	200156	44.0000
MCX SX	USDINR	27Apr2011	200173	46.8250

ExchangeNa...	Symbol	ExpiryD...	TokenNumber	Low	High	DPRLow	DPRHigh	BuyPrice	SellPrice	LTP	TrendIndicator	BuyQty	SellQty	TotalBuyQty	TotalSellQty
MCX SX	USDINR	29Dec2010	200074	46.6025	47.0000	45.2050	48.0000	46.6025	0.0000	46.6025	=	13	0	16.0000	
MCX SX	USDINR	27Jan2011	200078	46.9000	47.1600	45.9700	48.8150	47.1300	47.1600	47.1600	↑	2	8	41.0000	
MCX SX	USDINR	24Feb2011	200136	47.0000	47.5000	44.3650	49.0350	47.0000	47.5000	47.5000	=	29	2	60.0000	
MCX SX	USDINR	29Mar2011	200156	44.0000	45.0000	42.8675	47.3775	44.0000	45.0000	45.0000	↑	4	7	19.0000	
MCX SX	USDINR	27Apr2011	200173	46.8250	46.8250	44.4825	49.1675	46.8250	0.0000	46.8250	=	2	0	4.0000	

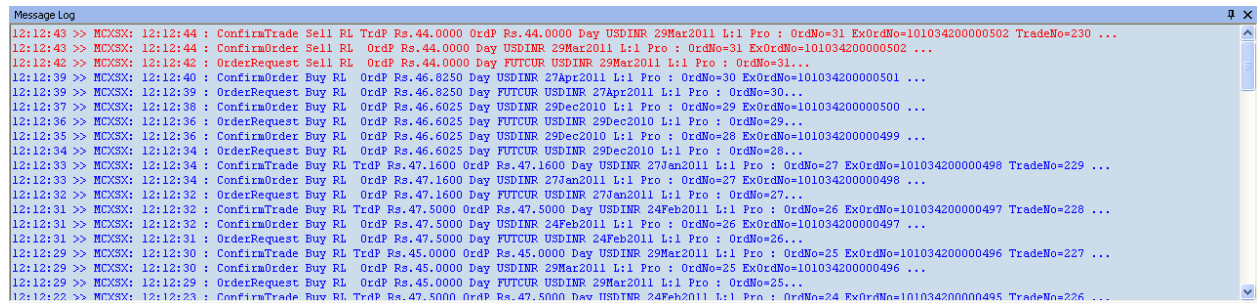
Snap Quote

Exchange	Instrument	Script	ExpiryDate	Buy Qty	Buy Price	Sell Price	Sell Qty	LTP	Add
MCX SX	FUTCUR	USDINR	29Mar2011	4	44.0000	45.0000	7	45.00	

- It shows the top buy and sells order with respect to current market.
- Blue color shows the details of buy order and Red color shows the details of sell order.
- User can view:
 - Buy Quantity
 - Buy Price
 - Sell Price
 - Sell Quantity
 - LTP (Last Trade Price).

1.7 Log Window

View → Log Window → Message Log

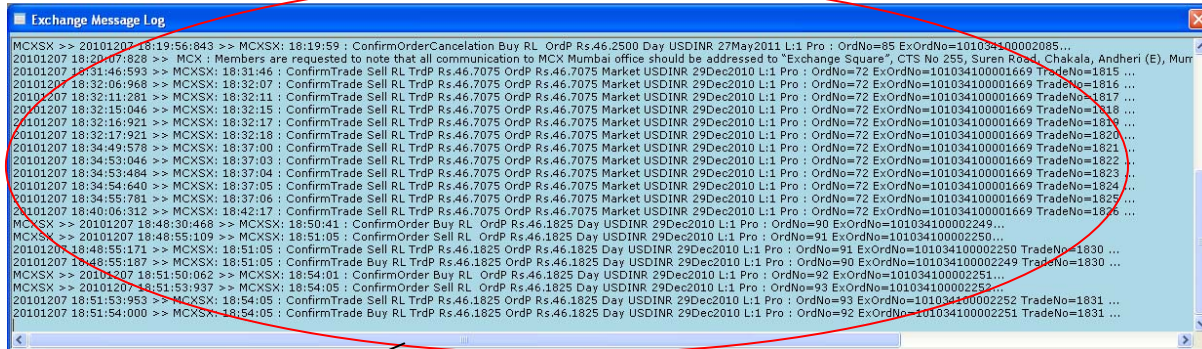


```
Message Log
12:12:43 >> MCKSX: 12:12:44 : ConfirmTrade Sell RL TrdP Rs.44.0000 OrdP Rs.44.0000 Day USDINR 29Mar2011 L:1 Pro : OrdNo=31 ExOrdNo=101034200000502 TradeNo=230 ...
12:12:43 >> MCKSX: 12:12:44 : ConfirmOrder Sell RL OrdP Rs.44.0000 Day USDINR 29Mar2011 L:1 Pro : OrdNo=31 ExOrdNo=101034200000502 ...
12:12:42 >> MCKSX: 12:12:42 : OrderRequest Sell RL OrdP Rs.44.0000 Day FUTCUR USDINR 29Mar2011 L:1 Pro : OrdNo=31...
12:12:39 >> MCKSX: 12:12:40 : ConfirmOrder Buy RL OrdP Rs.46.8250 Day USDINR 27Apr2011 L:1 Pro : OrdNo=30 ExOrdNo=101034200000501 ...
12:12:39 >> MCKSX: 12:12:39 : OrderRequest Buy RL OrdP Rs.46.8250 Day FUTCUR USDINR 27Apr2011 L:1 Pro : OrdNo=30...
12:12:37 >> MCKSX: 12:12:38 : ConfirmOrder Buy RL OrdP Rs.46.6025 Day USDINR 29Dec2010 L:1 Pro : OrdNo=29 ExOrdNo=101034200000500 ...
12:12:36 >> MCKSX: 12:12:36 : OrderRequest Buy RL OrdP Rs.46.6025 Day FUTCUR USDINR 29Dec2010 L:1 Pro : OrdNo=29...
12:12:35 >> MCKSX: 12:12:36 : ConfirmOrder Buy RL OrdP Rs.46.6025 Day USDINR 29Dec2010 L:1 Pro : OrdNo=28 ExOrdNo=101034200000499 ...
12:12:34 >> MCKSX: 12:12:34 : OrderRequest Buy RL OrdP Rs.46.6025 Day FUTCUR USDINR 29Dec2010 L:1 Pro : OrdNo=28...
12:12:33 >> MCKSX: 12:12:34 : ConfirmTrade Buy RL TrdP Rs.47.1600 OrdP Rs.47.1600 Day USDINR 27Jan2011 L:1 Pro : OrdNo=27 ExOrdNo=101034200000498 TradeNo=229 ...
12:12:33 >> MCKSX: 12:12:34 : ConfirmOrder Buy RL OrdP Rs.47.1600 Day USDINR 27Jan2011 L:1 Pro : OrdNo=27 ExOrdNo=101034200000498 ...
12:12:32 >> MCKSX: 12:12:32 : OrderRequest Buy RL OrdP Rs.47.1600 Day FUTCUR USDINR 27Jan2011 L:1 Pro : OrdNo=27...
12:12:31 >> MCKSX: 12:12:32 : ConfirmTrade Buy RL TrdP Rs.47.5000 OrdP Rs.47.5000 Day USDINR 24Feb2011 L:1 Pro : OrdNo=26 ExOrdNo=101034200000497 TradeNo=228 ...
12:12:31 >> MCKSX: 12:12:32 : ConfirmOrder Buy RL OrdP Rs.47.5000 Day USDINR 24Feb2011 L:1 Pro : OrdNo=26 ExOrdNo=101034200000497 ...
12:12:31 >> MCKSX: 12:12:31 : OrderRequest Buy RL OrdP Rs.47.5000 Day FUTCUR USDINR 24Feb2011 L:1 Pro : OrdNo=26...
12:12:29 >> MCKSX: 12:12:30 : ConfirmTrade Buy RL TrdP Rs.45.0000 OrdP Rs.45.0000 Day USDINR 29Mar2011 L:1 Pro : OrdNo=25 ExOrdNo=101034200000496 TradeNo=227 ...
12:12:29 >> MCKSX: 12:12:30 : ConfirmOrder Buy RL OrdP Rs.45.0000 Day USDINR 29Mar2011 L:1 Pro : OrdNo=25 ExOrdNo=101034200000496 ...
12:12:29 >> MCKSX: 12:12:29 : OrderRequest Buy RL OrdP Rs.45.0000 Day FUTCUR USDINR 29Mar2011 L:1 Pro : OrdNo=25...
12:12:22 >> MCKSX: 12:12:23 : ConfirmTrade Buy RL TrdP Rs.47.5000 OrdP Rs.47.5000 Day USDINR 24Feb2011 L:1 Pro : OrdNo=24 ExOrdNo=101034200000495 TradeNo=226 ...
```

- This Message Log window includes Order confirmation message, Order Rejection message with rejection reason, Trade Confirmation, Modify confirmation, Cancel confirmation etc.
- Buy order message shows in Blue color.
- Sell order message shows in Red Color.
- This Message Log includes following information :
 - Name of the Exchange
 - Time
 - Status of Order
 - Buy/Sell Order Type
 - RL or SL Type
 - Order Price: If Order type is Stop Loss then trigger price also included in Order Price.
 - Symbol name with expiry date
 - No. of Lots/Qty.
 - Pro/Client Type: If user selected client then it includes with client name
 - Order Number: Its shows the internal Order Number
 - Exchange Order Number: Order Number which is provided by the exchange
 - If message is for trade then it includes the trade price and trade No. also.

1.8 Message Log

View → Log Window → Exchange Message Log

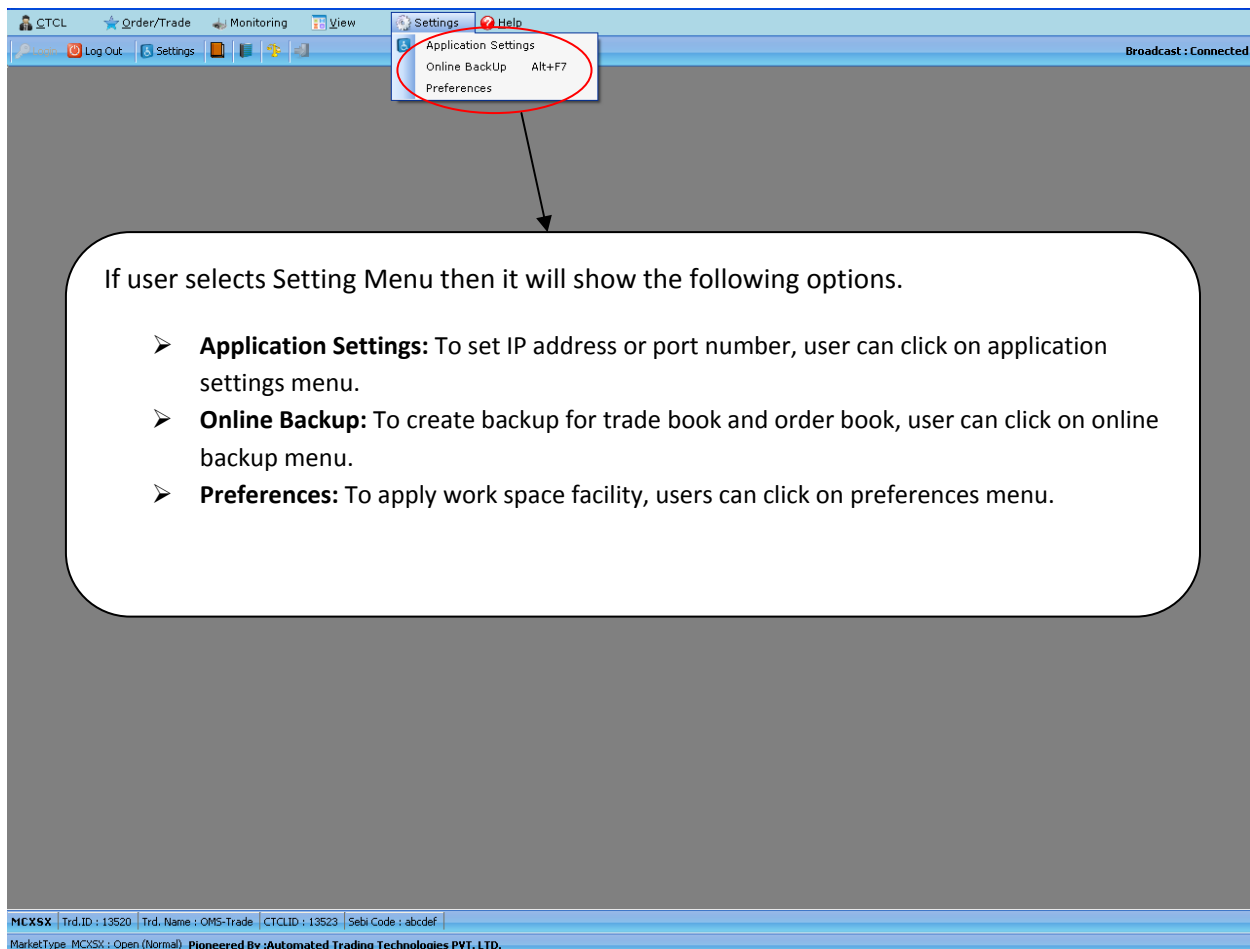


It shows all messages which are sending by the Exchange.

4 Settingmenu

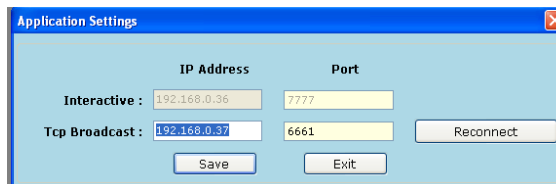
Setting Menu contains following options :

1. Application Settings
2. Online Backup
3. Preferences



1.1 Application Setting

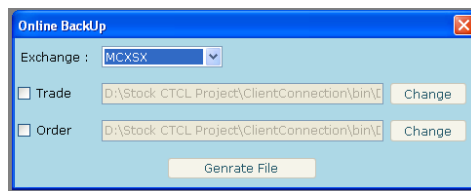
Settings → Application Setting



- It allows user to set IP Address and Port Number of Interactive (system on which manager is installed) and TCP Broadcast (system on which UDP Server is running).
- If Broadcast is disconnected, then click the reconnect button for connected with UDP server.

1.2 Online Backup

Settings → Online Backup



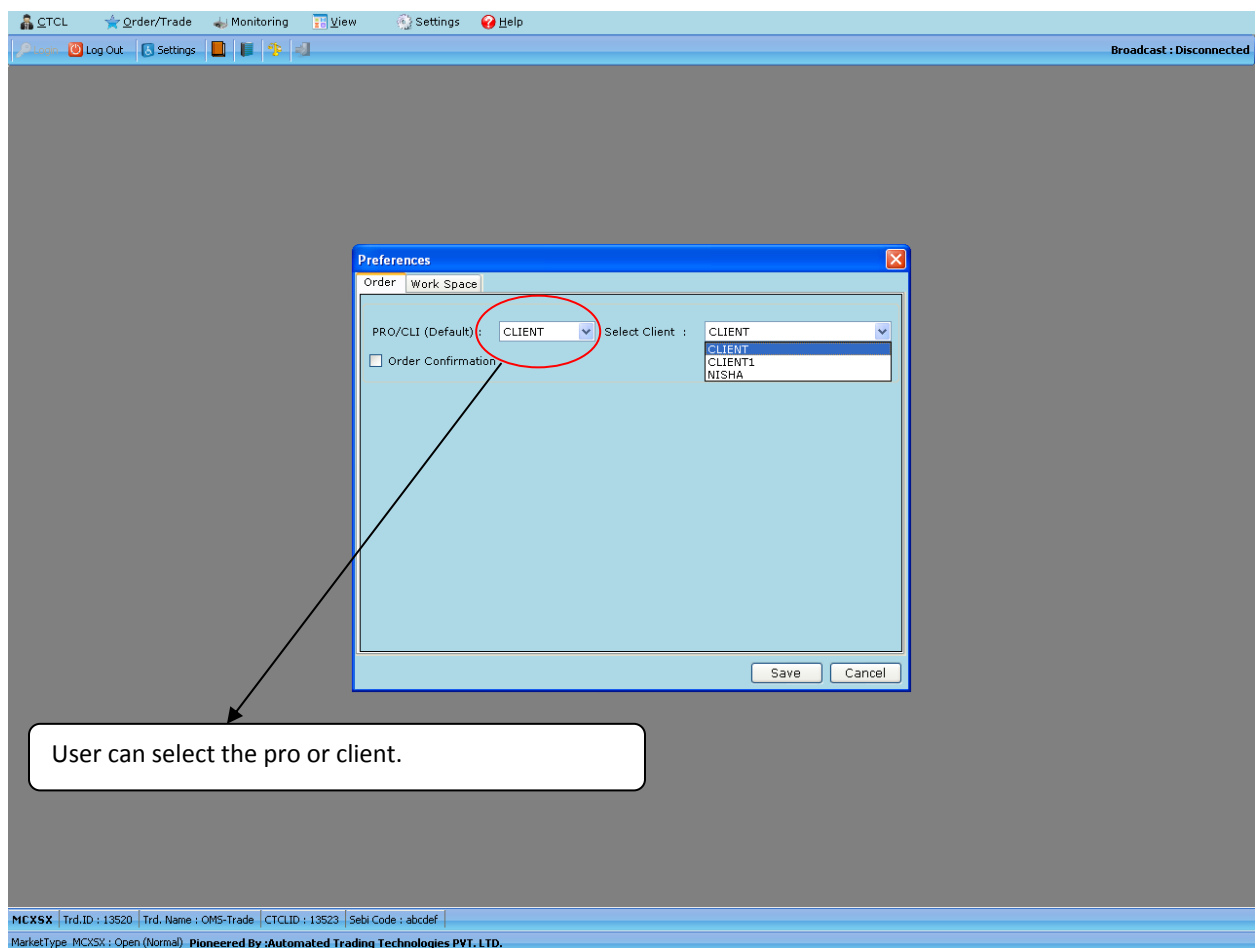
- The user can click on **Online Backup** in the Setting menu, to invoke the **Online Backup** window.
- It provides the facility for **backup of Trade or Order** of Exchange which selected by the user. It will allow user to change the path for backup by pressing on **Change Button**.
- From this online Backup window, user can select the particular Exchange for taking backup for Trade or Order.

1.3 Preferences

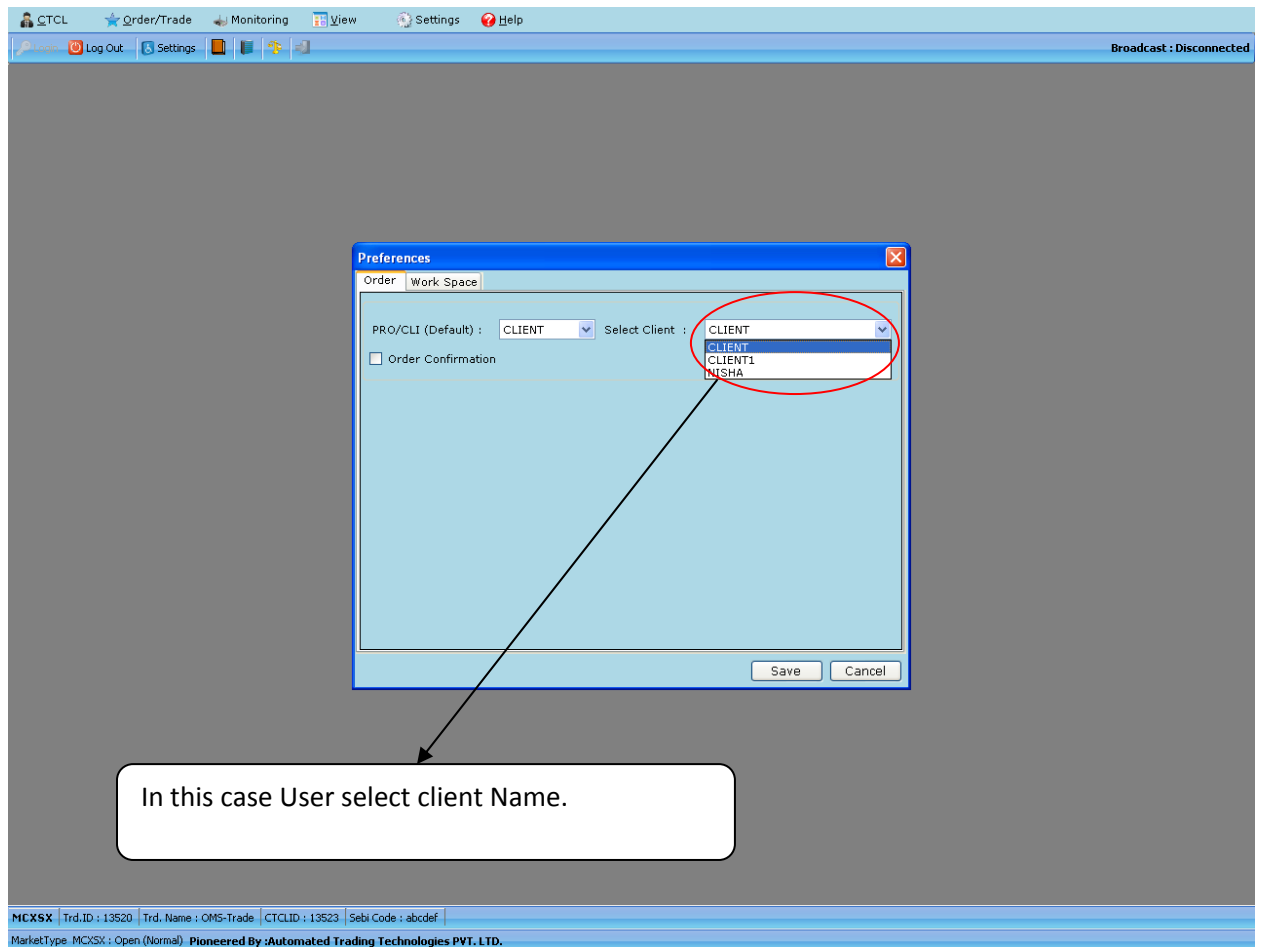
Settings → Preferences

- The user can click on Preferences in the Setting menu, to invoke the Preferences window.
- This Preferences window contains the other two options.
 1. Order.
 2. Work Space

❖ Order



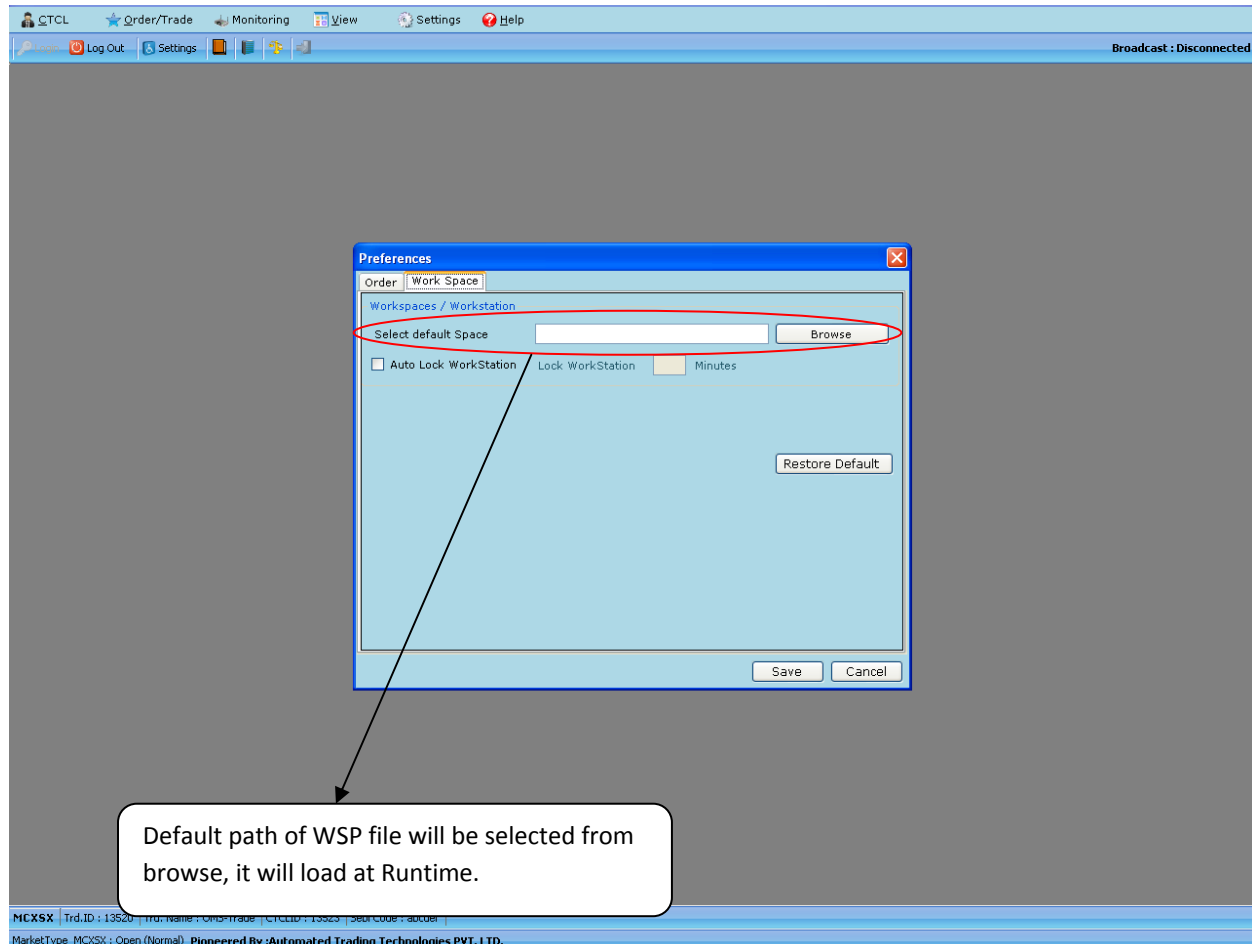
- This Order Tab allows user to set Client as a “PRO” or “CLIENT” (select one Mapped Client). If User selects “PRO” then Order Entry form takes this User by default as a “PRO”.



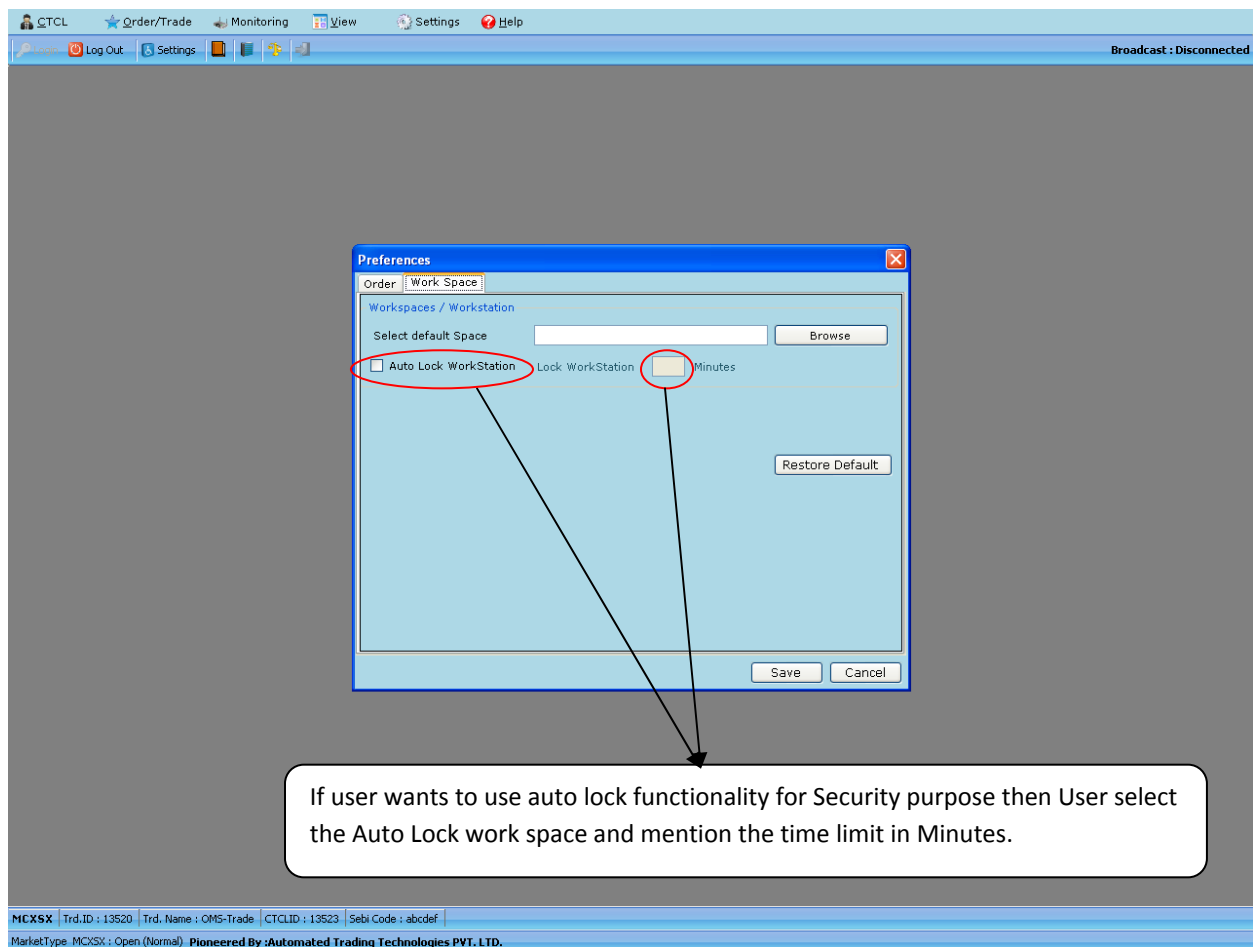
- If User Select “CLIENT” then User can view the list of the clients which are mapped under this user.
- User select mapped client which will displayed by default when User run Order Entry form.

1.4 Work Space

Settings → Work Space



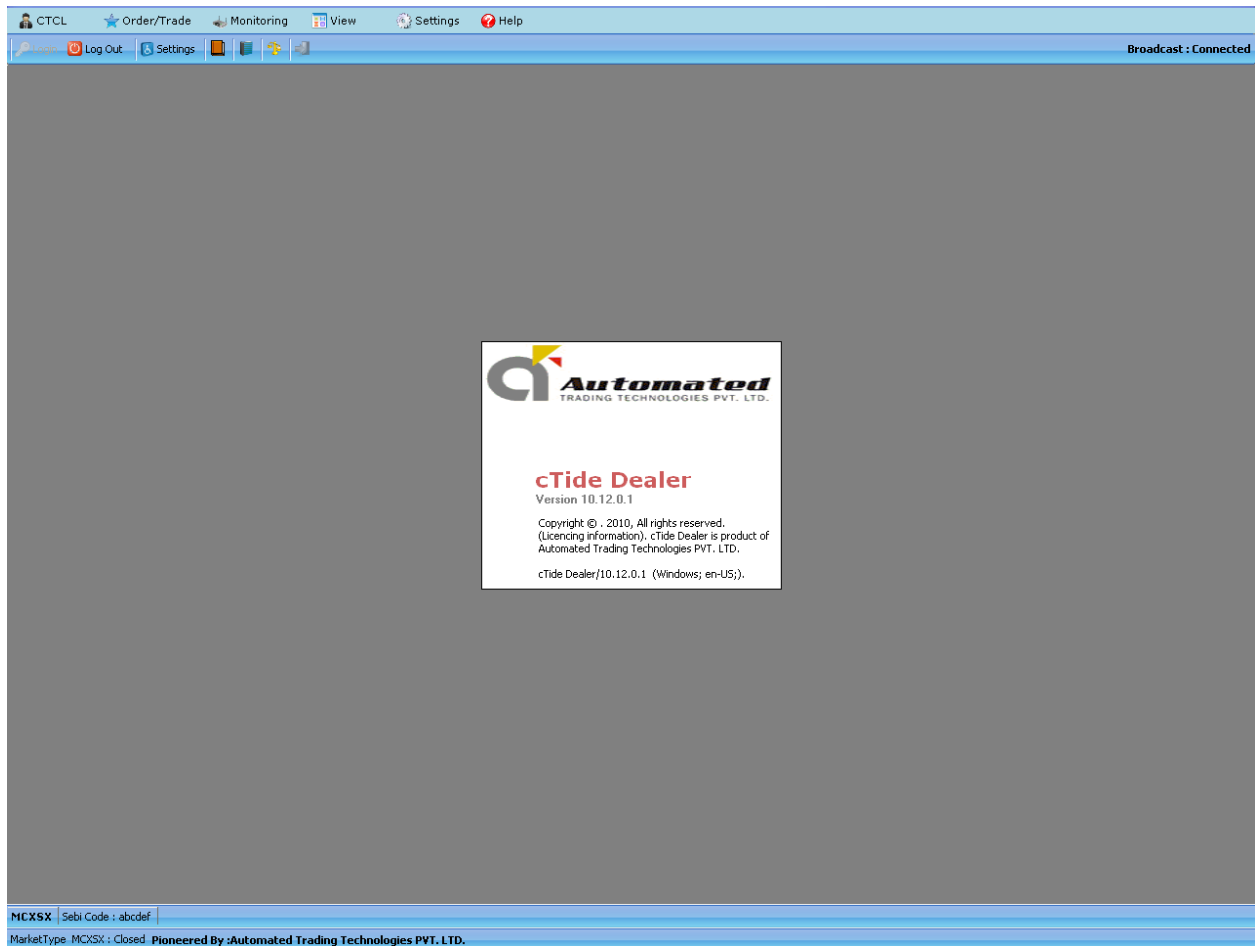
- This workspace window allow user to save the workspace.
- Selected File will be Loaded when user run Application.
- Application must be restart to apply changes in preferences.



- It gives the facility to view the current date and time.
- As well as gives the facility to automatic Lock the window for particular time limit, Even if any movement of mouse or user can press any key from the keyboard. It will ask the user password to make any modifications.

5 Helpmenu

1. About US



- The user can click on **About US** in the Help menu, to invoke the About US window.
- This window will show information About Product and company.